

# DAILY REPORT



For more information, email [trading\\_sales@tsx.com](mailto:trading_sales@tsx.com)

April 24, 2025

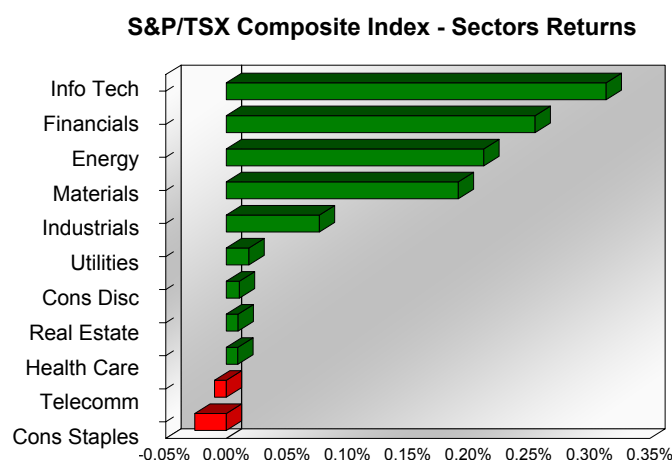
Indices	April 24 Close	Previous Close	Change	% Change
S&P/TSX Composite Index	24,727.53	24,472.68		1.04 %
S&P/TSX 60 Index	1,485.18	1,470.81		0.98 %
S&P/TSX Venture Composite	650.35	635.43		2.35 %
S&P/TSX Completion Index	1,476.77	1,457.57		1.32 %
S&P/TSX Smallcap Index	804.14	791.27		1.63 %

S&P/TSX Composite Index			
Advancers		Decliners	Unchanged
169		45	4

S&P/TSX Composite Index			
Top 10 Index Contributors		Top 10 Index Detractors	
Constituent	Index Contribution	Constituent	Index Contribution
SHOP	48.25	ATD	-4.90
BN	26.31	RY	-4.50
CSU	16.68	BCE	-2.25
ENB	14.59	MRU	-1.79
BMO	8.56	CNR	-1.61
CCO	8.04	BYD	-1.25
CNQ	6.94	FFH	-0.91
BAM	6.49	T	-0.73
MFC	6.42	QSR	-0.70
TD	6.11	ARE	-0.67

S&P/TSX Composite Index			
Top 10 Advancers		Top 10 Decliners	
Constituent	Return	Constituent	Return
CJT	15.34%	ARE	-9.84%
TLRY	11.48%	BYD	-4.10%
TFII	7.32%	AYA	-2.62%
EFR	7.23%	WDO	-2.06%
CXB	7.03%	TXG	-2.03%
ASTL	6.73%	ATD	-1.26%
NG	6.49%	MRU	-1.25%
ERO	6.24%	BCE	-1.17%
MTL	6.18%	REI.UN	-1.16%
BHC	5.57%	VET	-1.12%

S&P/TSX Composite Index				
Sector	# of Index Constituents	Weight	Market Cap (\$B)	Index Contribution
Information Technology	10	9.48 %	\$334.20	76.81
Financials	25	32.14 %	\$1,132.92	62.48
Energy	42	16.40 %	\$577.93	52.09
Materials	50	14.04 %	\$494.76	46.95
Industrials	28	12.29 %	\$433.27	18.80
Utilities	15	4.00 %	\$140.94	4.55
Consumer Discretionary	10	3.24 %	\$114.13	2.62
Real Estate	19	1.83 %	\$64.33	2.40
Health Care	4	0.25 %	\$8.91	2.32
Communication Services	5	2.28 %	\$80.39	-2.37
Consumer Staples	10	4.06 %	\$142.98	-6.37
<b>S&amp;P/TSX Composite Index</b>	<b>218</b>	<b>100.00 %</b>	<b>\$3,524.78</b>	<b>260.29</b>



This report is published by TSX Inc. TSX Inc. does not guarantee either the completeness or the accuracy of this information. The information contained in this report is provided for informational purposes only and you agree not to rely upon the information contained in this report for any trading, business or financial purpose. These sheets are printed in Canada and issued by TSX Inc. under the express condition, to which everyone receiving or making use thereof assents, that no liability shall be incurred by TSX Inc. or its affiliated companies or any other vendor or donor, including, without limitation, for reliance on or for any errors or inaccuracies in this report. Neither TMX Group Limited, TSX Inc., nor any of their affiliated companies, guarantees the completeness of the information contained in this document and are not responsible for any errors or omission in or your use of, or reliance on, the information. This publication is under copyright. © 2016 TSX Inc. All rights reserved. Do not copy, distribute, sell or modify this publication without the prior written consent of TSX Inc.

<http://www.tsx.com/trading>

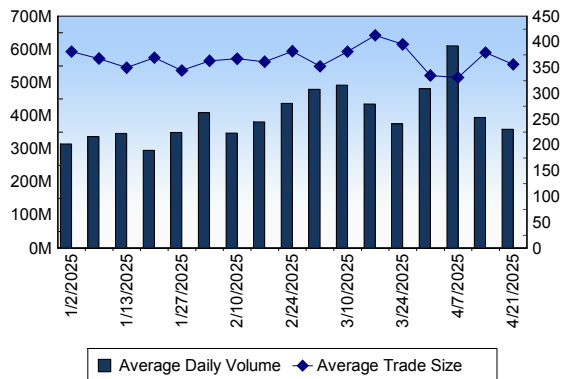
## TSX

Daily Volume	340,381,464
Daily Value	\$12,220,688,225
Daily Trades	942,108
Daily Symbols Traded	2,106

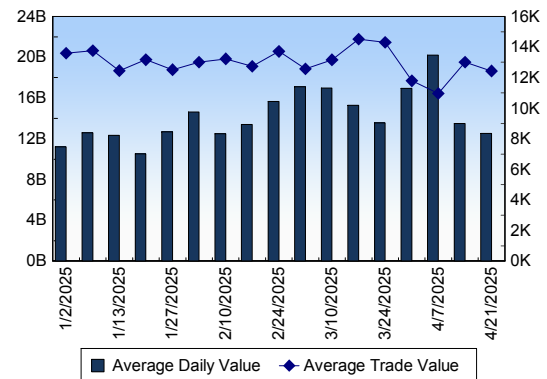
## TSX ANONYMOUS TRADING

Daily Volume	165,636,007
Daily Value	\$5,999,606,288
Average Trade Size	326
% TSX Volume	48.66 %

TSX Volume



TSX Value ( in Canadian Dollars )



Top 20 TSX Symbols by Volume

Symbol	TSX Volume	TSX Value
TD	10,613,999	\$914,432,744
ENB	7,431,582	\$476,954,830
WCP	6,989,640	\$56,918,672
SU	6,874,458	\$338,690,007
RY	6,825,147	\$1,111,944,118
CNQ	5,695,312	\$231,296,886
BMO	5,659,664	\$746,930,248
FM	5,043,554	\$96,341,855
MFC	4,976,813	\$208,068,022
CXB	4,820,286	\$15,753,316
TRP	4,660,937	\$319,448,030
CVE	4,582,720	\$77,019,268
USA	4,577,162	\$3,831,218
WEED	4,535,060	\$8,984,987
HND	4,120,942	\$35,542,647
BNS	4,046,716	\$272,096,899
BTO	3,728,456	\$16,254,643
CM	3,619,808	\$302,774,920
PPL	3,564,698	\$189,546,534
BTE	3,534,907	\$8,072,709

Top 20 TSX Symbols by Value

Symbol	TSX Volume	TSX Value
RY	6,825,147	\$1,111,944,118
TD	10,613,999	\$914,432,744
BMO	5,659,664	\$746,930,248
ENB	7,431,582	\$476,954,830
SU	6,874,458	\$338,690,007
TRP	4,660,937	\$319,448,030
CM	3,619,808	\$302,774,920
BNS	4,046,716	\$272,096,899
CNQ	5,695,312	\$231,296,886
SHOP	1,685,979	\$219,266,599
MFC	4,976,813	\$208,068,022
PPL	3,564,698	\$189,546,534
CNR	1,337,932	\$180,810,554
NTR	2,390,685	\$177,918,409
CSU	34,611	\$168,463,369
CP	1,600,822	\$161,900,361
DOL	900,467	\$154,036,399
CLS	1,026,973	\$132,264,495
WCN	459,151	\$124,303,733
BN	1,676,103	\$122,456,162

## ETF Trading

Daily Volume	42,065,723	Average Trade Value	\$13,792
Daily Value	\$1,020,848,784	Average Trade Size	568
# Trades	74,015	# of ETFs Traded	1,075

Top 10 ETFs by TSX Volume

Symbol	Market Volume	Market Value
HND	4,120,942	\$35,542,647
XEG	2,637,176	\$41,457,040
QQD	2,282,394	\$26,381,355
XIU	1,550,861	\$58,117,030
ZEB	1,548,860	\$62,264,532
XGD	1,328,663	\$39,914,030
QQU	1,204,231	\$22,082,933
HOD	1,080,167	\$7,590,713
HOU	900,610	\$8,670,766
DLR	866,054	\$12,259,891

Top 10 ETFs by TSX Value

Symbol	Market Volume	Market Value
ZEB	1,548,860	\$62,264,532
XIU	1,550,861	\$58,117,030
XEG	2,637,176	\$41,457,040
XGD	1,328,663	\$39,914,030
HND	4,120,942	\$35,542,647
VFV	233,576	\$31,308,699
XSP	472,153	\$26,671,834
QQD	2,282,394	\$26,381,355
HNU	817,303	\$23,171,979
QQU	1,204,231	\$22,082,933

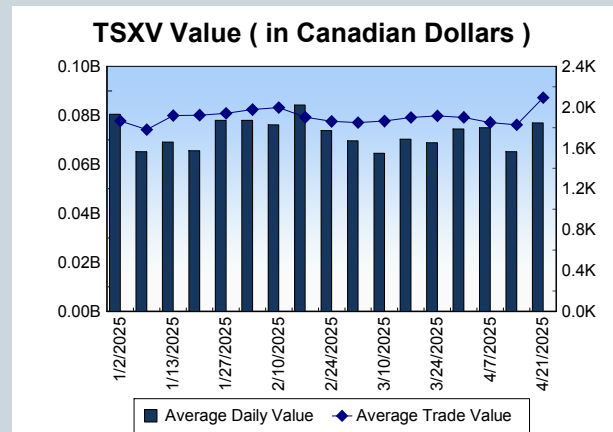
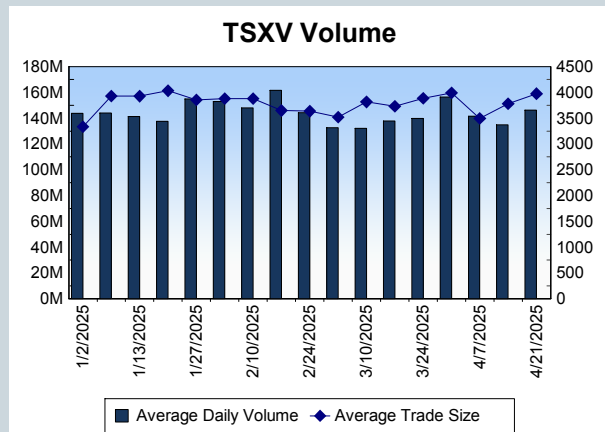
Block Trades	Non Block Trades
1,239	940,869

Top 5 Block Trade Brokers by Volume	
Broker	TSX Block Volume
RBC CAPITAL MARKETS	34,851,850
BMO NESBITT BURNS INC.	13,085,100
TD SECURITIES INC.	12,549,400
GOLDMAN SACHS CANADA I	9,992,300
NATIONAL BANK FINANCIAL	9,207,700

Top 5 Block Trade Symbols by Volume	
Symbol	TSX Block Volume
TD	8,343,000
RY	4,954,800
SU	4,815,600
ENB	4,756,200
BMO	4,227,900

TSXV	
Daily Volume	128,189,674
Daily Value	\$62,900,213
Daily Trades	31,411
Daily Symbols Traded	1,005

TSXV ANONYMOUS TRADING	
Daily Volume	80,208,202
Daily Value	\$37,344,066
Average Trade Size	4,787
% TSXV Volume	62.57%



Top 20 TSXV Symbols by Volume		
Symbol	TSXV Volume	TSXV Value
CCMI	2,906,000	\$72,650
SXL	2,534,833	\$54,509
SRI	2,486,500	\$40,390
GFG	2,207,410	\$400,348
FG	2,200,331	\$44,141
BAY	2,144,187	\$121,380
VCU	2,115,336	\$123,660
CBR	2,072,633	\$785,520
OGN	1,993,134	\$3,617,852
PCLO	1,955,901	\$101,512
MJS	1,951,100	\$242,254
VCT	1,738,612	\$26,079
TECT	1,551,547	\$82,315
BEX	1,448,006	\$95,811
LUM	1,447,476	\$1,729,756
TAO	1,412,642	\$210,579
SAE	1,251,235	\$40,311
SPC	1,233,928	\$30,888
OCG	1,200,600	\$251,739
ORS	1,180,816	\$60,805

Top 20 TSXV Symbols by Value		
Symbol	TSXV Volume	TSXV Value
TOI	39,162	\$6,217,597
SXGC	772,430	\$3,769,906
OGN	1,993,134	\$3,617,852
ARTG	174,912	\$3,432,935
LMN	69,906	\$2,956,100
PNG	864,624	\$2,011,709
SGD	230,872	\$1,857,958
LUM	1,447,476	\$1,729,756
LUCA	1,090,802	\$1,513,799
HIVE	534,304	\$1,259,161
FDR	204,778	\$941,957
ITR	374,882	\$894,184
DV	218,986	\$828,824
CBR	2,072,633	\$785,520
UCU	443,974	\$745,952
ZDC	224,122	\$720,324
RIO	728,518	\$710,266
AFM	766,659	\$649,155
NDA	421,255	\$629,863
NFG	328,818	\$513,151

Dark TSX/TSXV Trading			
Volume	28,649,260	Daily Trades	150,949
Value	1,068,210,045	Daily Symbols Traded	1,435