

DAILY REPORT



For more information, email trading_sales@tsx.com

April 16, 2025

Indices	April 16 Close	Previous Close	Change	% Change
S&P/TSX Composite Index	24,106.79	24,067.93		0.16 %
S&P/TSX 60 Index	1,445.20	1,444.52		0.05 %
S&P/TSX Venture Composite	638.87	630.04		1.40 %
S&P/TSX Completion Index	1,451.10	1,441.79		0.65 %
S&P/TSX Smallcap Index	791.29	782.20		1.16 %

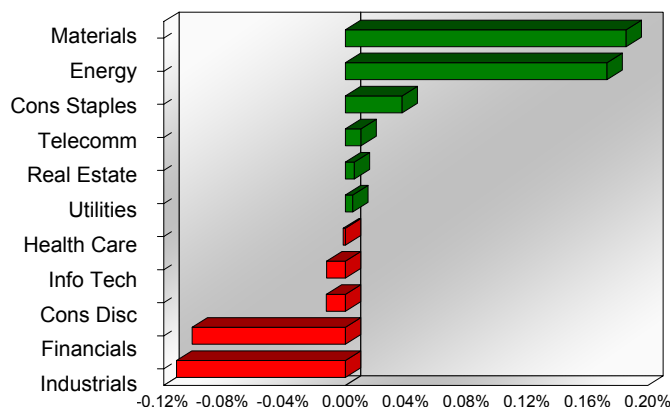
S&P/TSX Composite Index		
Advancers	Decliners	Unchanged
129	88	1

S&P/TSX Composite Index			
Top 10 Index Contributors		Top 10 Index Detractors	
Constituent	Index Contribution	Constituent	Index Contribution
CNQ	12.95	CP	-11.38
CSU	7.57	BN	-11.17
AEM	5.94	MFC	-9.81
ARX	4.65	SHOP	-6.68
ATD	4.24	RY	-4.54
FNV	3.93	BAM	-3.74
WPM	3.76	BMO	-3.66
IMG	3.63	TRI	-3.46
K	3.42	CNR	-3.35
NTR	3.34	CLS	-2.93

S&P/TSX Composite Index			
Top 10 Advancers		Top 10 Decliners	
Constituent	Return	Constituent	Return
TXG	9.86%	FTT	-4.32%
IMG	8.08%	BBU.UN	-4.14%
EFR	7.30%	LNR	-3.86%
LUG	5.62%	DOO	-3.52%
SII	4.51%	CLS	-3.22%
MEG	4.38%	ATS	-3.05%
ARX	4.19%	EDR	-3.00%
OGC	4.17%	BAM	-2.13%
CEU	4.17%	GIL	-2.07%
IIP.UN	4.13%	MFC	-2.05%

S&P/TSX Composite Index				
Sector	# of Index Constituents	Weight	Market Cap (\$B)	Index Contribution
Materials	50	14.61 %	\$502.00	44.68
Energy	42	16.26 %	\$558.65	41.63
Consumer Staples	10	4.08 %	\$140.17	9.06
Communication Services	5	2.31 %	\$79.20	2.51
Real Estate	19	1.84 %	\$63.32	1.46
Utilities	15	4.00 %	\$137.60	1.18
Health Care	4	0.24 %	\$8.40	-0.31
Information Technology	10	8.99 %	\$308.91	-2.96
Consumer Discretionary	10	3.24 %	\$111.44	-3.02
Financials	25	31.91 %	\$1,096.51	-24.38
Industrials	28	12.50 %	\$429.60	-26.85
S&P/TSX Composite Index	218	100.00 %	\$3,435.80	43.00

S&P/TSX Composite Index - Sectors Returns



This report is published by TSX Inc. TSX Inc. does not guarantee either the completeness or the accuracy of this information. The information contained in this report is provided for informational purposes only and you agree not to rely upon the information contained in this report for any trading, business or financial purpose. These sheets are printed in Canada and issued by TSX Inc. under the express condition, to which everyone receiving or making use thereof assents, that no liability shall be incurred by TSX Inc. or its affiliated companies or any other vendor or donor, including, without limitation, for reliance on or for any errors or inaccuracies in this report. Neither TMX Group Limited, TSX Inc., nor any of their affiliated companies, guarantees the completeness of the information contained in this document and are not responsible for any errors or omission in or your use of, or reliance on, the information. This publication is under copyright. © 2016 TSX Inc. All rights reserved. Do not copy, distribute, sell or modify this publication without the prior written consent of TSX Inc. <http://www.tsx.com/trading>

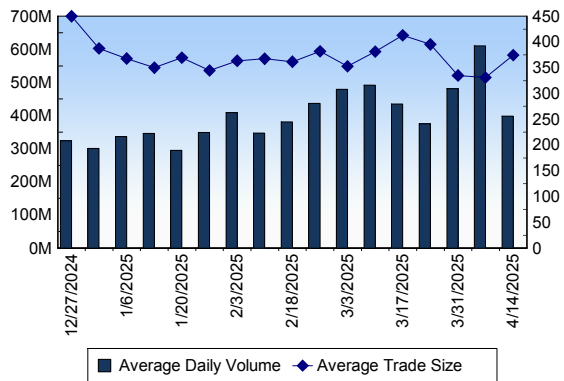
TSX

Daily Volume	420,419,896
Daily Value	\$13,783,480,570
Daily Trades	1,094,750
Daily Symbols Traded	2,154

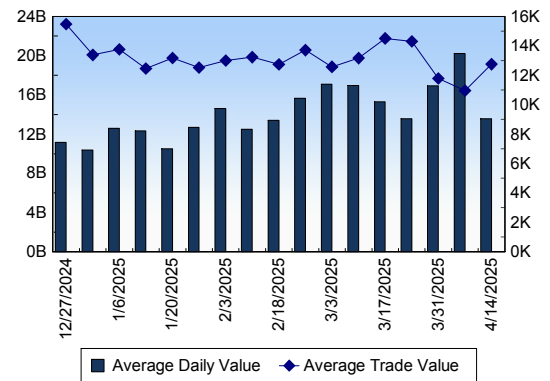
TSX ANONYMOUS TRADING

Daily Volume	207,147,135
Daily Value	\$6,867,217,557
Average Trade Size	369
% TSX Volume	49.27 %

TSX Volume



TSX Value (in Canadian Dollars)



Top 20 TSX Symbols by Volume

Symbol	TSX Volume	TSX Value
CVE	11,584,122	\$186,978,891
CNQ	9,923,431	\$388,101,824
TD	8,859,415	\$741,637,666
RY	7,798,407	\$1,250,035,815
ENB	6,970,763	\$431,669,394
TRP	6,320,941	\$428,656,828
BTE	6,093,485	\$14,148,626
BTO	5,887,952	\$27,576,205
XIU	5,499,096	\$200,875,935
IMG	5,335,380	\$60,227,197
SU	5,294,667	\$248,208,133
MFC	4,825,481	\$191,665,564
CXB	4,470,877	\$14,596,585
BNS	4,338,110	\$283,334,040
DSV	4,325,672	\$11,920,356
ABX	4,255,332	\$122,240,240
HND	4,133,722	\$29,295,713
WCP	4,097,705	\$32,803,035
ORE	4,016,889	\$5,059,630
PPL	3,939,266	\$204,309,913

Top 20 TSX Symbols by Value

Symbol	TSX Volume	TSX Value
RY	7,798,407	\$1,250,035,815
TD	8,859,415	\$741,637,666
BMO	3,571,505	\$459,493,143
ENB	6,970,763	\$431,669,394
TRP	6,320,941	\$428,656,828
CNQ	9,923,431	\$388,101,824
CSU	66,935	\$313,710,460
SHOP	2,677,791	\$310,256,186
CM	3,750,747	\$305,692,319
BNS	4,338,110	\$283,334,040
SU	5,294,667	\$248,208,133
NTR	3,121,731	\$230,510,924
NA	1,953,759	\$224,669,861
PPL	3,939,266	\$204,309,913
XIU	5,499,096	\$200,875,935
MFC	4,825,481	\$191,665,564
CNR	1,386,288	\$188,962,210
CVE	11,584,122	\$186,978,891
AEM	1,003,052	\$171,774,369
TOU	2,222,257	\$137,465,530

ETF Trading

Daily Volume	59,603,356	Average Trade Value	\$12,565
Daily Value	\$1,523,592,681	Average Trade Size	492
# Trades	121,255	# of ETFs Traded	1,105

Top 10 ETFs by TSX Volume

Symbol	Market Volume	Market Value
XIU	5,499,096	\$200,875,935
HND	4,133,722	\$29,295,713
XEG	2,983,290	\$45,526,533
ZEB	2,645,385	\$103,560,773
HOD	2,243,744	\$16,302,125
NVDA	1,935,425	\$46,356,805
QQD	1,763,095	\$22,293,834
QQU	1,448,371	\$24,647,862
DLR	1,343,929	\$19,031,246
SPXU	1,032,329	\$20,531,675

Top 10 ETFs by TSX Value

Symbol	Market Volume	Market Value
XIU	5,499,096	\$200,875,935
ZEB	2,645,385	\$103,560,773
VFV	454,946	\$59,346,366
HXT	782,152	\$49,493,883
NVDA	1,935,425	\$46,356,805
XEG	2,983,290	\$45,526,533
ZSP	410,283	\$33,008,032
HND	4,133,722	\$29,295,713
XSP	510,252	\$28,017,992
QQU	1,448,371	\$24,647,862

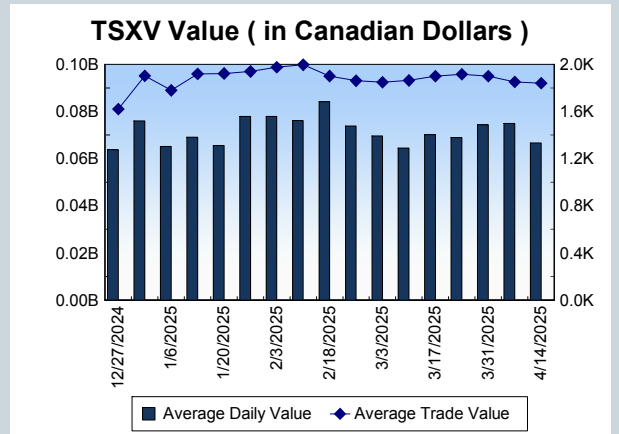
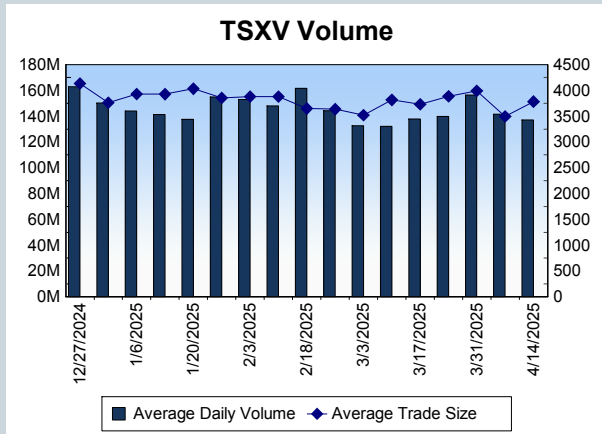
Block Trades	Non Block Trades
1,674	1,093,076

Top 5 Block Trade Brokers by Volume	
Broker	TSX Block Volume
BMO NESBITT BURNS INC.	30,559,400
TD SECURITIES INC.	19,973,800
RBC CAPITAL MARKETS	19,262,200
GOLDMAN SACHS CANADA I	18,062,600
CIBC WORLD MARKETS INC.	16,742,100

Top 5 Block Trade Symbols by Volume	
Symbol	TSX Block Volume
CVE	7,202,400
RY	6,180,600
TD	5,811,100
CNQ	5,668,400
ENB	4,766,900

TSXV	
Daily Volume	156,086,020
Daily Value	\$75,782,784
Daily Trades	38,837
Daily Symbols Traded	1,030

TSXV ANONYMOUS TRADING	
Daily Volume	88,094,568
Daily Value	\$45,811,208
Average Trade Size	4,152
% TSXV Volume	56.44%



Top 20 TSXV Symbols by Volume		
Symbol	TSXV Volume	TSXV Value
PCQ	4,776,412	\$143,292
BARU	2,881,219	\$114,974
ABI	2,660,283	\$151,339
TK	2,512,995	\$95,224
WRLG	2,190,952	\$1,590,659
VXTR	2,061,300	\$52,533
OM	1,990,297	\$758,716
KCC	1,666,000	\$56,020
GSHR	1,513,051	\$538,281
PLUR	1,492,228	\$300,094
HVG	1,479,900	\$66,836
MON	1,305,003	\$415,376
GUS	1,301,108	\$1,003,755
DRY	1,287,409	\$251,474
LUCA	1,269,995	\$1,733,978
AFM	1,250,776	\$1,026,810
OMG	1,211,133	\$568,540
MGM	1,207,114	\$109,543
AAG	1,201,936	\$628,443
SEV	1,198,200	\$17,974

Top 20 TSXV Symbols by Value		
Symbol	TSXV Volume	TSXV Value
ARTG	273,097	\$5,364,729
TOI	22,404	\$3,454,632
WRLG.NT.U	26,021	\$2,685,350
ITR	1,037,574	\$2,597,239
MAU	593,785	\$2,262,785
SGD	234,146	\$2,032,998
LUCA	1,269,995	\$1,733,978
NFG	923,048	\$1,624,388
WRLG	2,190,952	\$1,590,659
LMN	37,883	\$1,548,729
FWZ	715,360	\$1,323,214
FDR	215,896	\$1,222,368
HIVE	565,453	\$1,135,258
AFM	1,250,776	\$1,026,810
GUS	1,301,108	\$1,003,755
HSTR	732,992	\$876,729
MKO	184,259	\$839,276
SXGC	177,736	\$814,469
RIO	861,556	\$776,069
OM	1,990,297	\$758,716

Dark TSX/TSXV Trading			
Volume	31,838,650	Daily Trades	149,219
Value	1,134,932,047	Daily Symbols Traded	1,521