

# DAILY REPORT



For more information, email [trading\\_sales@tsx.com](mailto:trading_sales@tsx.com)

March 13, 2025

Indices	March 13 Close	Previous Close	Change	% Change
S&P/TSX Composite Index	24,203.23	24,423.34		-0.90 %
S&P/TSX 60 Index	1,453.74	1,468.51		-1.01 %
S&P/TSX Venture Composite	613.17	613.98		-0.13 %
S&P/TSX Completion Index	1,445.24	1,451.81		-0.45 %
S&P/TSX Smallcap Index	790.82	790.37		0.06 %

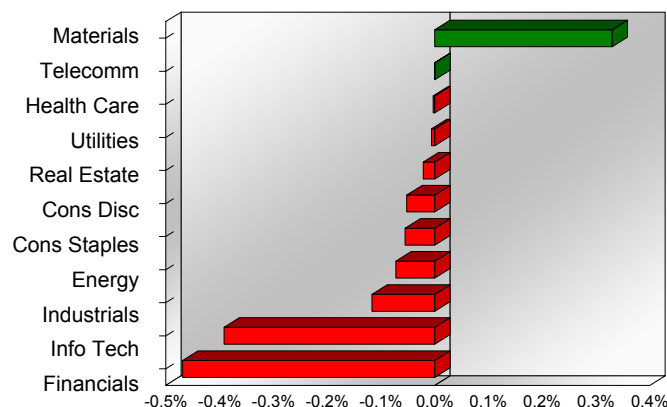
S&P/TSX Composite Index		
Advancers	Decliners	Unchanged
74	144	2

S&P/TSX Composite Index			
Top 10 Index Contributors		Top 10 Index Detractors	
Constituent	Index Contribution	Constituent	Index Contribution
FM	14.00	SHOP	-65.60
AEM	10.90	RY	-28.99
WPM	8.62	BN	-20.88
ABX	8.37	CSU	-17.15
FNV	6.91	MFC	-12.81
K	4.30	BMO	-12.13
TECK.B	2.93	CP	-9.38
SU	2.86	CNQ	-9.27
AG	2.67	ATD	-7.91
ENB	2.63	TD	-7.86

S&P/TSX Composite Index			
Top 10 Advancers		Top 10 Decliners	
Constituent	Return	Constituent	Return
FM	14.40%	VET	-8.26%
AG	9.29%	TLRY	-6.52%
BIR	8.11%	SHOP	-5.85%
ASTL	7.14%	CJT	-5.58%
NG	6.61%	GSY	-5.49%
OLA	6.22%	RCH	-5.12%
BTO	6.08%	GIL	-4.55%
NGD	5.19%	EMP.A	-4.54%
ELD	4.84%	LSPD	-4.33%
SSRM	4.75%	BAM	-3.70%

S&P/TSX Composite Index				
Sector	# of Index Constituents	Weight	Market Cap (\$B)	Index Contribution
Materials	49	13.59 %	\$468.99	80.66
Communication Services	5	2.53 %	\$87.49	0.18
Health Care	4	0.28 %	\$9.59	-0.71
Utilities	15	3.94 %	\$136.14	-1.38
Real Estate	20	1.92 %	\$66.42	-5.18
Consumer Discretionary	11	3.31 %	\$114.25	-12.65
Consumer Staples	10	3.78 %	\$130.46	-13.41
Energy	43	16.93 %	\$584.34	-17.68
Industrials	28	12.49 %	\$431.00	-28.45
Information Technology	10	9.46 %	\$326.64	-95.66
Financials	25	31.77 %	\$1,096.77	-114.50
<b>S&amp;P/TSX Composite Index</b>	<b>220</b>	<b>100.00 %</b>	<b>\$3,452.09</b>	<b>-208.77</b>

S&P/TSX Composite Index - Sectors Returns



This report is published by TSX Inc. TSX Inc. does not guarantee either the completeness or the accuracy of this information. The information contained in this report is provided for informational purposes only and you agree not to rely upon the information contained in this report for any trading, business or financial purpose. These sheets are printed in Canada and issued by TSX Inc. under the express condition, to which everyone receiving or making use thereof assents, that no liability shall be incurred by TSX Inc. or its affiliated companies or any other vendor or donor, including, without limitation, for reliance on or for any errors or inaccuracies in this report. Neither TMX Group Limited, TSX Inc., nor any of their affiliated companies, guarantees the completeness of the information contained in this document and are not responsible for any errors or omission in or your use of, or reliance on, the information. This publication is under copyright. © 2016 TSX Inc. All rights reserved. Do not copy, distribute, sell or modify this publication without the prior written consent of TSX Inc. <http://www.tsx.com/trading>

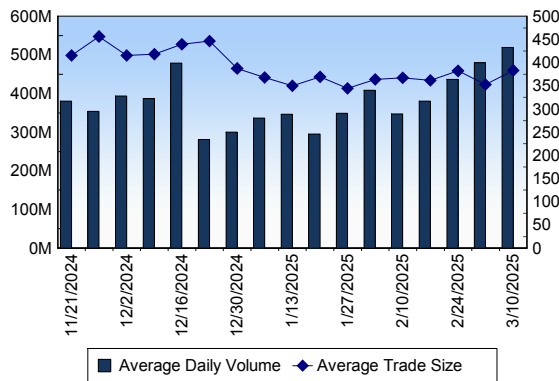
## TSX

Daily Volume	481,118,667
Daily Value	\$16,203,472,396
Daily Trades	1,246,048
Daily Symbols Traded	2,158

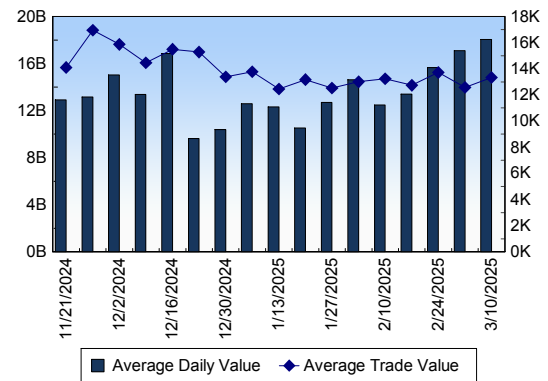
## TSX ANONYMOUS TRADING

Daily Volume	267,677,206
Daily Value	\$9,485,755,769
Average Trade Size	387
% TSX Volume	55.64 %

### TSX Volume



### TSX Value ( in Canadian Dollars )



### Top 20 TSX Symbols by Volume

Symbol	TSX Volume	TSX Value
CNQ	32,828,912	\$1,360,249,999
CVE	18,441,444	\$347,855,937
SU	11,464,241	\$592,657,713
MFC	11,207,081	\$460,135,224
VRN	9,810,293	\$85,086,485
ENB	8,477,790	\$520,428,862
TRP	6,904,095	\$464,396,032
FM	6,801,174	\$133,325,547
XIU	6,243,829	\$229,999,863
CXB	6,166,575	\$18,935,727
WCP	5,744,217	\$48,692,945
GWO	5,675,392	\$291,963,145
BTO	5,526,182	\$22,858,490
TD	5,402,117	\$450,763,316
HND	5,196,050	\$26,312,085
BTE	5,166,405	\$15,604,199
BNS	5,093,960	\$347,403,026
T	4,891,849	\$105,764,404
CM	4,580,752	\$364,287,287
OGC	4,353,442	\$17,771,535

### Top 20 TSX Symbols by Value

Symbol	TSX Volume	TSX Value
CNQ	32,828,912	\$1,360,249,999
SU	11,464,241	\$592,657,713
ENB	8,477,790	\$520,428,862
RY	3,086,496	\$488,085,764
TRP	6,904,095	\$464,396,032
MFC	11,207,081	\$460,135,224
TD	5,402,117	\$450,763,316
SHOP	2,946,437	\$387,194,743
CM	4,580,752	\$364,287,287
CVE	18,441,444	\$347,855,937
BNS	5,093,960	\$347,403,026
NA	2,731,420	\$314,962,745
GWO	5,675,392	\$291,963,145
BMO	2,078,148	\$287,117,319
SLF	3,366,151	\$264,028,681
NTR	3,586,753	\$259,226,590
CSU	51,631	\$241,656,936
FTS	3,649,517	\$236,090,834
XIU	6,243,829	\$229,999,863
PPL	3,978,213	\$221,290,402

### ETF Trading

Daily Volume	52,563,475	Average Trade Value	\$13,903
Daily Value	\$1,427,193,815	Average Trade Size	512
# Trades	102,654	# of ETFs Traded	1,108

### Top 10 ETFs by TSX Volume

Symbol	Market Volume	Market Value
XIU	6,243,829	\$229,999,863
HND	5,196,050	\$26,312,085
ZEB	2,789,192	\$110,412,659
XEG	1,808,609	\$29,658,859
QQU	1,435,476	\$28,176,626
QQD	1,249,063	\$15,262,140
SPXD	1,131,209	\$19,951,819
SPXU	1,100,855	\$24,621,426
NVDA	962,849	\$25,907,508
XGD	867,292	\$23,319,241

### Top 10 ETFs by TSX Value

Symbol	Market Volume	Market Value
XIU	6,243,829	\$229,999,863
ZEB	2,789,192	\$110,412,659
VFV	315,676	\$44,861,963
HXT	600,841	\$38,358,880
ZSP	383,533	\$33,567,221
XSP	520,986	\$29,952,001
XEG	1,808,609	\$29,658,859
QQU	1,435,476	\$28,176,626
XFN	466,661	\$26,425,423
HND	5,196,050	\$26,312,085

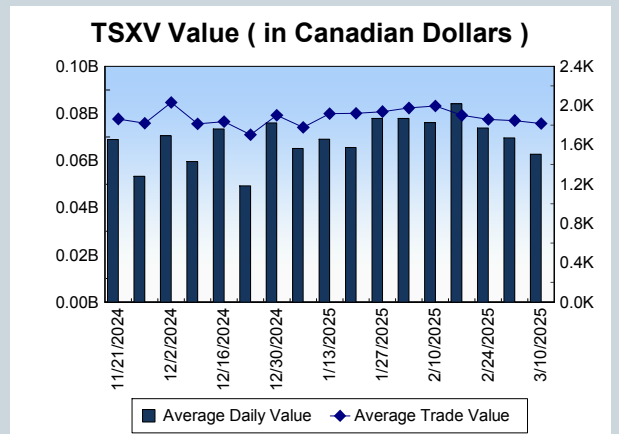
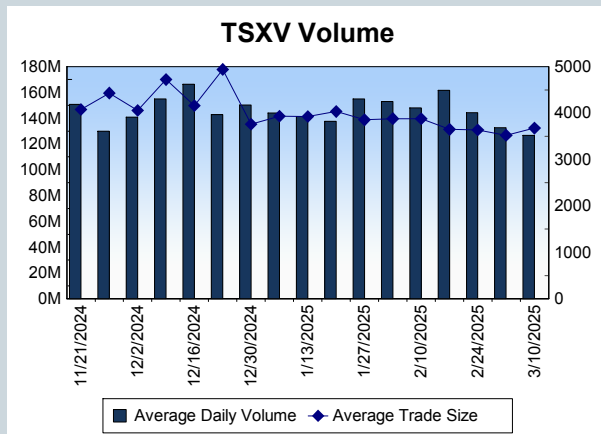
<b>Block Trades</b>	<b>Non Block Trades</b>
1,501	1,244,547

Top 5 Block Trade Brokers by Volume	
Broker	TSX Block Volume
GOLDMAN SACHS CANADA I	65,373,500
BMO NESBITT BURNS INC.	64,101,400
RBC CAPITAL MARKETS	30,115,300
SCOTIA CAPITAL INC.	17,281,400
TD SECURITIES INC.	15,678,600

Top 5 Block Trade Symbols by Volume	
Symbol	TSX Block Volume
CNQ	27,869,600
CVE	14,736,800
SU	9,109,600
MFC	8,196,000
ENB	6,091,500

TSXV	
Daily Volume	148,271,286
Daily Value	\$74,201,513
Daily Trades	38,862
Daily Symbols Traded	1,011

TSXV ANONYMOUS TRADING	
Daily Volume	88,917,501
Daily Value	\$48,326,047
Average Trade Size	4,167
% TSXV Volume	59.97%



Top 20 TSXV Symbols by Volume		
Symbol	TSXV Volume	TSXV Value
AFM	9,804,708	\$4,649,906
KCP	3,389,483	\$767,360
WRLG	3,006,426	\$1,791,390
WLF	2,968,150	\$168,270
NOB	2,801,750	\$191,644
SLG	2,375,552	\$842,617
FAN	1,824,586	\$654,164
OMI	1,755,554	\$286,639
BCM	1,648,681	\$367,431
PNPN	1,609,605	\$2,571,493
SHL	1,608,000	\$63,030
AKR	1,564,000	\$226,780
GSVR	1,536,447	\$302,209
RUG	1,489,000	\$44,670
MAI	1,440,336	\$506,459
MUR	1,400,000	\$21,000
PNG	1,397,913	\$3,277,849
ROS	1,192,000	\$94,293
AGX	1,152,299	\$216,670
IPT	1,148,145	\$242,840

Top 20 TSXV Symbols by Value		
Symbol	TSXV Volume	TSXV Value
TOI	34,702	\$4,714,985
AFM	9,804,708	\$4,649,906
LMN	87,695	\$3,479,889
ARTG	193,971	\$3,297,999
PNG	1,397,913	\$3,277,849
SGD	352,945	\$2,835,437
PNPN	1,609,605	\$2,571,493
NFG	719,340	\$1,880,979
WRLG	3,006,426	\$1,791,390
FDR	291,556	\$1,610,861
EMO	1,069,413	\$1,516,833
HIVE	590,333	\$1,449,834
ITR	693,293	\$1,229,264
LUCA	930,283	\$1,069,039
CNC	931,013	\$1,045,009
GOT	526,696	\$1,033,401
ATX	450,863	\$960,139
SLG	2,375,552	\$842,617
ZDC	274,081	\$821,328
SXGC	217,992	\$782,720

Dark TSX/TSXV Trading			
Volume	44,658,820	Daily Trades	189,568
Value	1,493,339,112	Daily Symbols Traded	1,451