

DAILY REPORT



For more information, email trading_sales@tsx.com

March 10, 2025

Indices	March 10 Close	Previous Close	Change	% Change
S&P/TSX Composite Index	24,380.71	24,758.76		-1.53 %
S&P/TSX 60 Index	1,471.87	1,492.02		-1.35 %
S&P/TSX Venture Composite	594.74	614.30		-3.18 %
S&P/TSX Completion Index	1,424.14	1,457.57		-2.29 %
S&P/TSX Smallcap Index	769.31	792.24		-2.89 %

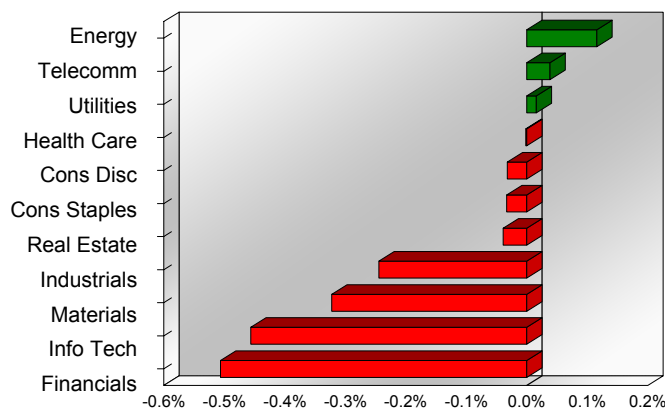
S&P/TSX Composite Index		
Advancers	Decliners	Unchanged
41	179	0

S&P/TSX Composite Index			
Top 10 Index Contributors		Top 10 Index Detractors	
Constituent	Index Contribution	Constituent	Index Contribution
ENB	19.79	SHOP	-79.75
TRP	6.13	CP	-27.29
VRN	5.74	RY	-22.07
PPL	5.24	BN	-21.90
T	5.21	CSU	-20.17
BCE	4.91	CNR	-13.53
CNQ	2.57	FFH	-11.80
KEY	2.54	MFC	-10.63
ALA	2.54	TECK.B	-9.82
FTS	2.43	TD	-8.89

S&P/TSX Composite Index			
Top 10 Advancers		Top 10 Decliners	
Constituent	Return	Constituent	Return
VRN	16.01 %	WCP	-14.55 %
SOBO	3.97 %	ASTL	-13.41 %
KEY	3.67 %	MX	-12.49 %
MDA	3.50 %	CS	-10.97 %
IIP.UN	3.29 %	AYA	-9.80 %
ALA	3.10 %	SEA	-9.46 %
BEP.UN	2.97 %	ATZ	-7.89 %
AQN	2.62 %	NG	-7.83 %
PPL	2.28 %	IVN	-7.65 %
T	2.11 %	LUG	-7.52 %

S&P/TSX Composite Index				
Sector	# of Index Constituents	Weight	Market Cap (\$B)	Index Contribution
Energy	43	16.63 %	\$578.40	28.72
Communication Services	5	2.62 %	\$90.95	9.55
Utilities	15	3.92 %	\$136.35	3.87
Health Care	4	0.28 %	\$9.80	-0.39
Consumer Discretionary	11	3.43 %	\$119.39	-8.00
Consumer Staples	10	3.90 %	\$135.74	-8.28
Real Estate	20	1.93 %	\$67.08	-9.72
Industrials	28	12.67 %	\$440.41	-60.50
Materials	49	12.76 %	\$443.61	-79.83
Information Technology	10	9.62 %	\$334.66	-112.96
Financials	25	32.24 %	\$1,121.00	-125.41
S&P/TSX Composite Index	220	100.00 %	\$3,477.40	-362.93

S&P/TSX Composite Index - Sectors Returns



This report is published by TSX Inc. TSX Inc. does not guarantee either the completeness or the accuracy of this information. The information contained in this report is provided for informational purposes only and you agree not to rely upon the information contained in this report for any trading, business or financial purpose. These sheets are printed in Canada and issued by TSX Inc. under the express condition, to which everyone receiving or making use thereof assents, that no liability shall be incurred by TSX Inc. or its affiliated companies or any other vendor or donor, including, without limitation, for reliance on or for any errors or inaccuracies in this report. Neither TMX Group Limited, TSX Inc., nor any of their affiliated companies, guarantees the completeness of the information contained in this document and are not responsible for any errors or omission in or your use of, or reliance on, the information. This publication is under copyright. © 2016 TSX Inc. All rights reserved. Do not copy, distribute, sell or modify this publication without the prior written consent of TSX Inc. <http://www.tsx.com/trading>

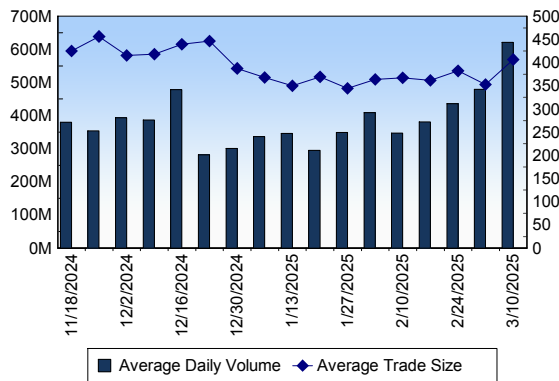
TSX

Daily Volume	621,465,689
Daily Value	\$21,326,781,842
Daily Trades	1,528,021
Daily Symbols Traded	2,217

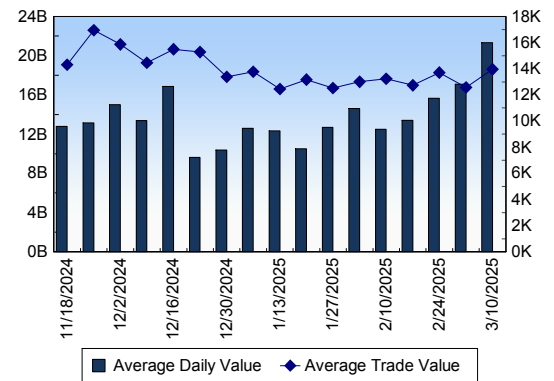
TSX ANONYMOUS TRADING

Daily Volume	301,109,351
Daily Value	\$10,666,632,207
Average Trade Size	363
% TSX Volume	48.45 %

TSX Volume



TSX Value (in Canadian Dollars)



Top 20 TSX Symbols by Volume

Symbol	TSX Volume	TSX Value
VRN	27,269,131	\$221,507,917
WCP	25,508,647	\$206,035,028
SU	23,606,948	\$1,215,219,143
MFC	22,175,392	\$914,218,305
CNQ	17,749,766	\$725,037,768
ENB	14,401,842	\$885,920,092
TOU	11,724,589	\$752,496,150
TRP	10,811,391	\$720,632,199
TD	9,628,567	\$817,838,635
BTE	9,535,431	\$27,026,567
PPL	9,335,735	\$515,997,029
BTO	8,952,963	\$33,686,946
CVE	7,379,995	\$133,148,259
OGC	6,992,302	\$25,861,808
T	6,969,865	\$161,218,557
BNS	6,818,583	\$471,179,136
XIU	6,473,283	\$240,487,119
AQN	6,206,887	\$44,213,344
CM	6,101,170	\$490,252,282
CS	5,415,406	\$38,475,578

Top 20 TSX Symbols by Value

Symbol	TSX Volume	TSX Value
SU	23,606,948	\$1,215,219,143
MFC	22,175,392	\$914,218,305
ENB	14,401,842	\$885,920,092
TD	9,628,567	\$817,838,635
TOU	11,724,589	\$752,496,150
CNQ	17,749,766	\$725,037,768
TRP	10,811,391	\$720,632,199
RY	3,566,641	\$582,297,155
PPL	9,335,735	\$515,997,029
CM	6,101,170	\$490,252,282
CNR	3,328,152	\$472,442,824
BNS	6,818,583	\$471,179,136
SHOP	3,356,958	\$451,275,957
SLF	5,209,953	\$408,960,237
CSU	76,907	\$369,763,949
BMO	2,212,218	\$311,613,534
NA	2,379,031	\$277,862,537
GWO	5,315,161	\$277,140,376
FFH	130,452	\$256,033,390
CP	2,349,262	\$253,323,202

ETF Trading

Daily Volume	65,818,651	Average Trade Value	\$11,587
Daily Value	\$1,779,038,152	Average Trade Size	429
# Trades	153,538	# of ETFs Traded	1,152

Top 10 ETFs by TSX Volume

Symbol	Market Volume	Market Value
XIU	6,473,283	\$240,487,119
HND	4,768,994	\$20,574,874
XEG	2,424,629	\$39,032,651
QQU	2,128,492	\$42,684,219
ZEB	1,957,085	\$78,612,377
QQD	1,482,413	\$17,720,065
ZUB	1,132,483	\$33,487,381
NVDA	1,044,639	\$26,076,969
BTCC.B	1,036,096	\$16,831,187
SPXU	1,032,520	\$23,890,592

Top 10 ETFs by TSX Value

Symbol	Market Volume	Market Value
XIU	6,473,283	\$240,487,119
ZEB	1,957,085	\$78,612,377
VFV	503,718	\$72,855,113
HXT	977,684	\$63,137,158
XSP	762,216	\$44,536,733
QQU	2,128,492	\$42,684,219
ZSP	472,458	\$42,106,456
XEG	2,424,629	\$39,032,651
XIC	973,720	\$38,041,063
XQQ	712,262	\$34,972,919

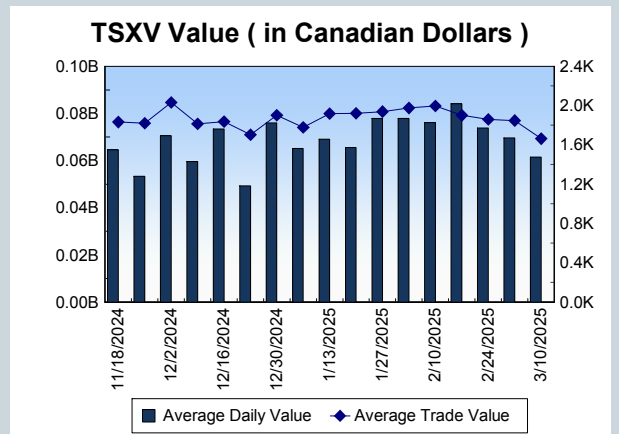
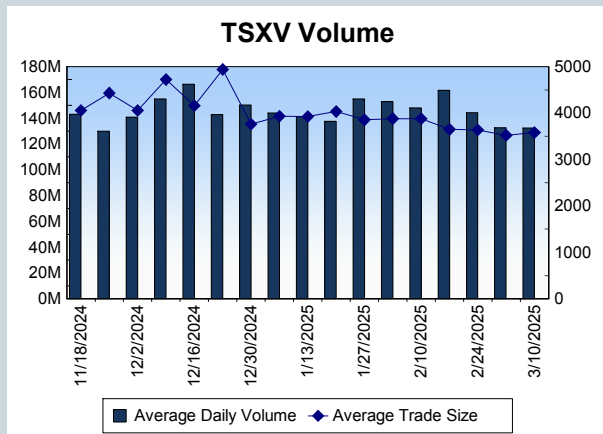
Block Trades	Non Block Trades
2,031	1,525,990

Top 5 Block Trade Brokers by Volume	
Broker	TSX Block Volume
RBC CAPITAL MARKETS	57,496,400
BMO NESBITT BURNS INC.	54,918,300
GOLDMAN SACHS CANADA I	42,586,200
NATIONAL BANK FINANCIAL	39,196,900
TD SECURITIES INC.	24,757,000

Top 5 Block Trade Symbols by Volume	
Symbol	TSX Block Volume
SU	20,394,800
MFC	19,099,500
CNQ	13,447,300
ENB	10,239,000
TOU	10,110,200

TSXV	
Daily Volume	132,318,243
Daily Value	\$61,498,811
Daily Trades	36,979
Daily Symbols Traded	1,070

TSXV ANONYMOUS TRADING	
Daily Volume	72,980,489
Daily Value	\$38,376,363
Average Trade Size	3,801
% TSXV Volume	55.16%



Top 20 TSXV Symbols by Volume		
Symbol	TSXV Volume	TSXV Value
NOB	2,481,250	\$104,764
OMG	1,958,174	\$633,753
GBU	1,718,269	\$159,994
RSLV	1,679,066	\$112,009
WRLG	1,518,517	\$878,024
QNC	1,473,356	\$859,890
HIVE	1,346,052	\$3,447,882
AMK	1,344,410	\$133,286
SCZ	1,281,164	\$574,478
AUUA	1,268,000	\$89,700
SLG	1,253,337	\$391,208
AFM	1,233,157	\$957,883
SEV	1,231,915	\$35,027
PNG	1,185,148	\$2,588,027
ATY	1,181,700	\$85,238
LUCA	1,179,926	\$1,352,304
ROS	1,171,351	\$81,376
SOP.H	1,167,520	\$5,928
MOG	1,078,350	\$137,830
ID	1,071,854	\$5,360

Top 20 TSXV Symbols by Value		
Symbol	TSXV Volume	TSXV Value
ARTG	338,485	\$5,423,568
TOI	31,139	\$4,405,935
HIVE	1,346,052	\$3,447,882
PNG	1,185,148	\$2,588,027
LMN	59,254	\$2,285,334
NDA	1,041,828	\$1,460,072
LUCA	1,179,926	\$1,352,304
SGD	161,865	\$1,199,571
NFG	460,264	\$1,122,565
AFM	1,233,157	\$957,883
FDR	181,611	\$942,694
EU	428,140	\$907,224
WRLG	1,518,517	\$878,024
CNC	859,132	\$876,410
QNC	1,473,356	\$859,890
PNPN	533,169	\$853,592
GOT	359,274	\$638,564
OMG	1,958,174	\$633,753
RML	623,848	\$610,943
SCZ	1,281,164	\$574,478

Dark TSX/TSXV Trading			
Volume	51,188,100	Daily Trades	206,094
Value	1,765,256,625	Daily Symbols Traded	1,585