

# DAILY REPORT



For more information, email [trading\\_sales@tsx.com](mailto:trading_sales@tsx.com)

March 7, 2025

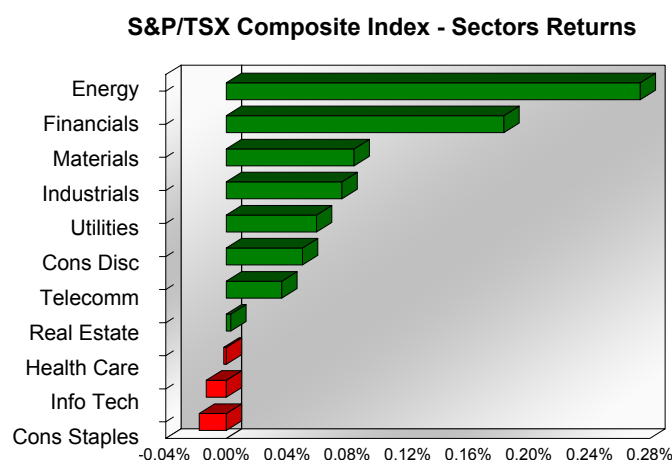
Indices	March 7 Close	Previous Close	Change	% Change
S&P/TSX Composite Index	24,758.76	24,584.04		0.71 %
S&P/TSX 60 Index	1,492.02	1,481.64		0.70 %
S&P/TSX Venture Composite	614.30	605.24		1.50 %
S&P/TSX Completion Index	1,457.57	1,446.65		0.76 %
S&P/TSX Smallcap Index	792.24	784.11		1.04 %

S&P/TSX Composite Index		
Advancers	Decliners	Unchanged
156	62	2

S&P/TSX Composite Index			
Top 10 Index Contributors		Top 10 Index Detractors	
Constituent	Index Contribution	Constituent	Index Contribution
RY	19.64	SHOP	-23.11
SU	14.92	ATD	-6.96
ENB	13.23	BAM	-5.31
CNQ	11.84	TECK.B	-3.58
TD	10.45	BN	-3.48
WCN	8.82	CP	-3.36
QSR	8.17	FM	-2.73
CLS	7.80	ATZ	-2.44
AEM	7.15	GWO	-2.12
IMO	6.48	CNR	-2.07

S&P/TSX Composite Index			
Top 10 Advancers		Top 10 Decliners	
Constituent	Return	Constituent	Return
MDA	17.73%	ATZ	-7.25%
CLS	7.65%	ASTL	-4.88%
FVI	6.65%	BDGI	-4.14%
NG	6.24%	ARE	-3.91%
LUG	6.15%	CS	-3.57%
IMO	5.81%	AYA	-3.27%
IPCO	5.79%	FM	-3.25%
ATH	4.80%	HBM	-3.09%
SII	4.13%	BAM	-2.93%
AAV	4.01%	EFR	-2.50%

S&P/TSX Composite Index				
Sector	# of Index Constituents	Weight	Market Cap (\$B)	Index Contribution
Energy	43	16.28 %	\$574.78	67.28
Financials	25	32.25 %	\$1,139.01	45.10
Materials	49	12.90 %	\$455.44	20.76
Industrials	28	12.72 %	\$449.20	18.83
Utilities	15	3.85 %	\$135.87	14.66
Consumer Discretionary	11	3.41 %	\$120.56	12.37
Communication Services	5	2.54 %	\$89.64	9.00
Real Estate	20	1.94 %	\$68.49	0.71
Health Care	4	0.28 %	\$9.86	-0.40
Information Technology	10	9.96 %	\$351.55	-3.26
Consumer Staples	10	3.88 %	\$136.92	-4.41
<b>S&amp;P/TSX Composite Index</b>	<b>220</b>	<b>100.00 %</b>	<b>\$3,531.32</b>	<b>180.62</b>



This report is published by TSX Inc. TSX Inc. does not guarantee either the completeness or the accuracy of this information. The information contained in this report is provided for informational purposes only and you agree not to rely upon the information contained in this report for any trading, business or financial purpose. These sheets are printed in Canada and issued by TSX Inc. under the express condition, to which everyone receiving or making use thereof assents, that no liability shall be incurred by TSX Inc. or its affiliated companies or any other vendor or donor, including, without limitation, for reliance on or for any errors or inaccuracies in this report. Neither TMX Group Limited, TSX Inc., nor any of their affiliated companies, guarantees the completeness of the information contained in this document and are not responsible for any errors or omission in or your use of, or reliance on, the information. This publication is under copyright. © 2016 TSX Inc. All rights reserved. Do not copy, distribute, sell or modify this publication without the prior written consent of TSX Inc. <http://www.tsx.com/trading>

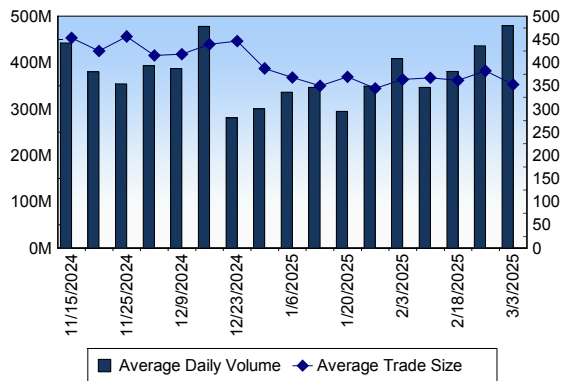
## TSX

Daily Volume	437,181,068
Daily Value	\$15,213,163,151
Daily Trades	1,292,136
Daily Symbols Traded	2,158

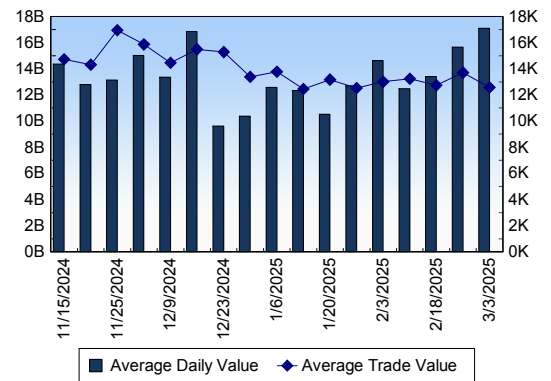
## TSX ANONYMOUS TRADING

Daily Volume	222,408,111
Daily Value	\$7,907,156,343
Average Trade Size	309
% TSX Volume	50.87 %

### TSX Volume



### TSX Value ( in Canadian Dollars )



### Top 20 TSX Symbols by Volume

Symbol	TSX Volume	TSX Value
CNQ	20,193,906	\$824,294,986
SU	18,129,237	\$923,903,954
ENB	8,670,759	\$523,247,898
MFC	7,814,738	\$328,373,084
CVE	7,791,265	\$143,959,602
AQN	7,665,360	\$49,799,914
TRP	6,661,946	\$438,953,789
T	6,264,017	\$142,218,782
GWO	6,145,916	\$326,531,646
XIU	5,885,059	\$220,781,661
BTE	5,405,502	\$15,805,266
BCE	5,250,324	\$187,623,975
TD	4,991,858	\$426,126,965
CM	4,923,239	\$400,654,381
AC	4,893,450	\$79,686,726
HND	4,857,123	\$23,421,482
VRN	4,689,376	\$33,275,973
K	4,604,037	\$74,191,981
XEG	3,895,821	\$63,082,966
PPL	3,852,003	\$209,891,821

### Top 20 TSX Symbols by Value

Symbol	TSX Volume	TSX Value
SU	18,129,237	\$923,903,954
CNQ	20,193,906	\$824,294,986
RY	3,433,254	\$566,667,351
ENB	8,670,759	\$523,247,898
SHOP	3,572,192	\$509,663,526
TRP	6,661,946	\$438,953,789
TD	4,991,858	\$426,126,965
CM	4,923,239	\$400,654,381
MFC	7,814,738	\$328,373,084
GWO	6,145,916	\$326,531,646
BN	3,418,881	\$252,678,988
CP	2,263,441	\$252,162,359
BNS	3,586,254	\$248,518,656
XIU	5,885,059	\$220,781,661
BMO	1,536,809	\$216,508,428
TOU	3,373,126	\$213,703,534
PPL	3,852,003	\$209,891,821
BCE	5,250,324	\$187,623,975
CSU	34,772	\$170,032,193
NA	1,367,804	\$160,317,501

## ETF Trading

Daily Volume	60,528,787	Average Trade Value	\$14,349
Daily Value	\$1,622,933,067	Average Trade Size	535
# Trades	113,103	# of ETFs Traded	1,119

### Top 10 ETFs by TSX Volume

Symbol	Market Volume	Market Value
XIU	5,885,059	\$220,781,661
HND	4,857,123	\$23,421,482
XEG	3,895,821	\$63,082,966
ZEB	2,216,532	\$89,520,623
QQU	1,923,883	\$40,654,466
HOD	1,741,598	\$11,430,900
SPXU	1,607,757	\$38,425,137
NVDA	1,241,545	\$31,877,212
DLR	1,164,329	\$17,068,770
HOU	1,121,928	\$12,576,762

### Top 10 ETFs by TSX Value

Symbol	Market Volume	Market Value
XIU	5,885,059	\$220,781,661
ZEB	2,216,532	\$89,520,623
VFV	551,514	\$80,708,192
XEG	3,895,821	\$63,082,966
HXT	667,676	\$43,479,438
QQU	1,923,883	\$40,654,466
SPXU	1,607,757	\$38,425,137
XSP	597,885	\$35,525,031
ZSP	389,112	\$35,090,466
NVDA	1,241,545	\$31,877,212

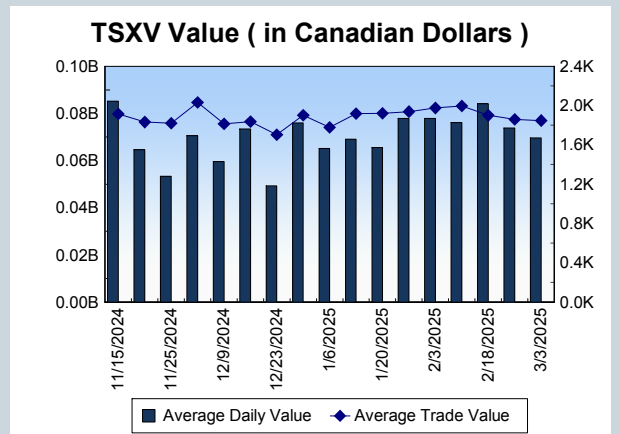
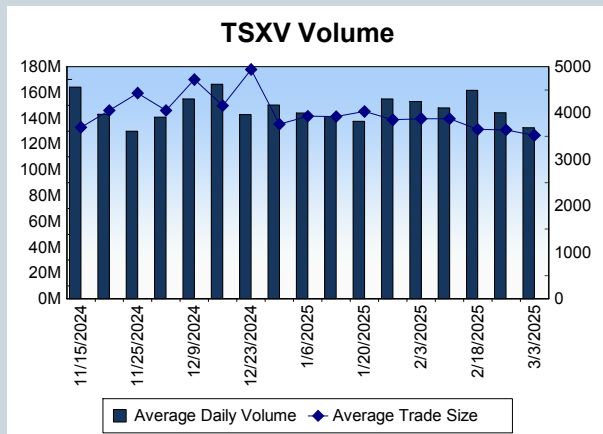
<b>Block Trades</b>	<b>Non Block Trades</b>
1,479	1,290,657

Top 5 Block Trade Brokers by Volume	
Broker	TSX Block Volume
BMO NESBITT BURNS INC.	34,497,200
GOLDMAN SACHS CANADA I	25,232,800
TD SECURITIES INC.	18,891,400
NATIONAL BANK FINANCIAL	17,625,400
INSTINET CANADA LTD.	16,457,500

Top 5 Block Trade Symbols by Volume	
Symbol	TSX Block Volume
SU	14,417,100
CNQ	13,357,800
ENB	5,774,400
MFC	4,662,300
GWO	4,568,600

TSXV	
Daily Volume	112,461,489
Daily Value	\$63,234,047
Daily Trades	31,431
Daily Symbols Traded	1,019

TSXV ANONYMOUS TRADING	
Daily Volume	61,296,866
Daily Value	\$38,201,450
Average Trade Size	3,645
% TSXV Volume	54.50%



Top 20 TSXV Symbols by Volume		
Symbol	TSXV Volume	TSXV Value
SPC	2,114,406	\$48,770
SLG	2,108,225	\$696,755
PER	1,705,000	\$34,250
FMN	1,641,000	\$63,470
BYN	1,591,615	\$358,563
GSVR	1,530,171	\$248,143
SCZ	1,458,067	\$641,874
GPUS	1,395,277	\$112,351
HIVE	1,318,962	\$3,747,739
WRLG	1,313,700	\$793,894
BTCW	1,202,412	\$142,600
NOB	1,090,400	\$38,164
TAO	1,087,000	\$109,130
NSE	1,057,164	\$421,310
OOR	1,051,000	\$63,060
QNC	1,029,460	\$644,113
TUK	998,350	\$117,562
VPT	966,835	\$167,793
CNC	964,105	\$939,907
AISX	895,018	\$40,241

Top 20 TSXV Symbols by Value		
Symbol	TSXV Volume	TSXV Value
TOI	51,493	\$7,523,521
SGD	640,211	\$4,795,166
HIVE	1,318,962	\$3,747,739
ARTG	188,516	\$3,076,122
LMN	77,777	\$2,980,847
PNG	639,117	\$1,466,104
NFG	495,255	\$1,255,784
ZDC	424,525	\$1,223,083
EU	461,116	\$1,060,769
FDR	188,747	\$1,016,203
CNC	964,105	\$939,907
PWM	663,668	\$876,025
NDA	505,280	\$841,501
PNPN	511,437	\$826,511
EMO	669,373	\$818,170
WRLG	1,313,700	\$793,894
PTK	157,015	\$786,383
FWZ	438,219	\$754,833
SLG	2,108,225	\$696,755
QNC	1,029,460	\$644,113

Dark TSX/TSXV Trading			
Volume	40,206,270	Daily Trades	178,841
Value	1,555,225,844	Daily Symbols Traded	1,479