

DAILY REPORT



For more information, email trading_sales@tsx.com

December 19, 2024

Indices	December 19 Close	Previous Close	Change	% Change
S&P/TSX Composite Index	24,413.94	24,557.00		-0.58 %
S&P/TSX 60 Index	1,464.84	1,474.15		-0.63 %
S&P/TSX Venture Composite	582.59	582.31		0.05 %
S&P/TSX Completion Index	1,463.99	1,469.51		-0.38 %
S&P/TSX Smallcap Index	792.75	797.35		-0.58 %

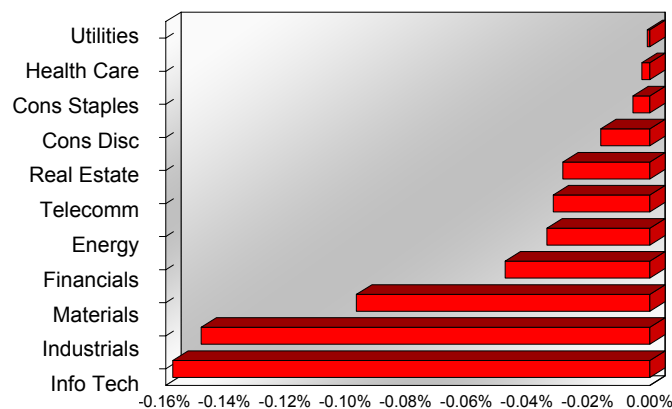
S&P/TSX Composite Index		
Advancers	Decliners	Unchanged
66	149	4

S&P/TSX Composite Index			
Top 10 Index Contributors		Top 10 Index Detractors	
Constituent	Index Contribution	Constituent	Index Contribution
MFC	5.45	SHOP	-35.47
BMO	4.09	CP	-20.29
GIB.A	3.56	TD	-7.33
CCO	3.52	RY	-6.96
BIP.UN	2.01	CSU	-5.97
SLF	1.93	CNR	-5.91
ARX	1.45	ABX	-5.69
CCL.B	1.45	CNQ	-5.36
IFC	1.36	NTR	-5.01
SOBO	1.18	CM	-4.95

S&P/TSX Composite Index			
Top 10 Advancers		Top 10 Decliners	
Constituent	Return	Constituent	Return
BIR	3.52%	CJT	-4.50%
SPB	3.15%	AYA	-4.17%
OLA	3.06%	NVA	-3.99%
DOO	3.02%	AP.UN	-3.34%
SOBO	2.40%	IFP	-3.02%
SES	2.39%	CP	-3.02%
VET	2.08%	SVI	-3.00%
GSY	2.08%	IMO	-2.81%
CS	1.98%	KMP.UN	-2.74%
IGM	1.98%	SHOP	-2.70%

S&P/TSX Composite Index				
Sector	# of Index Constituents	Weight	Market Cap (\$B)	Index Contribution
Utilities	15	3.78 %	\$131.53	-0.20
Health Care	4	0.29 %	\$10.01	-0.64
Consumer Staples	10	4.07 %	\$141.59	-1.37
Consumer Discretionary	11	3.32 %	\$115.49	-3.98
Real Estate	20	1.96 %	\$68.37	-7.06
Communication Services	5	2.40 %	\$83.46	-7.83
Energy	41	16.74 %	\$583.05	-8.36
Financials	26	33.17 %	\$1,155.22	-11.74
Materials	50	11.42 %	\$397.60	-23.81
Industrials	27	12.58 %	\$438.17	-36.42
Information Technology	10	10.28 %	\$357.85	-38.72
S&P/TSX Composite Index	219	100.00 %	\$3,482.32	-140.14

S&P/TSX Composite Index - Sectors Returns



This report is published by TSX Inc. TSX Inc. does not guarantee either the completeness or the accuracy of this information. The information contained in this report is provided for informational purposes only and you agree not to rely upon the information contained in this report for any trading, business or financial purpose. These sheets are printed in Canada and issued by TSX Inc. under the express condition, to which everyone receiving or making use thereof assents, that no liability shall be incurred by TSX Inc. or its affiliated companies or any other vendor or donor, including, without limitation, for reliance on or for any errors or inaccuracies in this report. Neither TMX Group Limited, TSX Inc., nor any of their affiliated companies, guarantees the completeness of the information contained in this document and are not responsible for any errors or omission in or your use of, or reliance on, the information. This publication is under copyright. © 2016 TSX Inc. All rights reserved. Do not copy, distribute, sell or modify this publication without the prior written consent of TSX Inc. <http://www.tsx.com/trading>

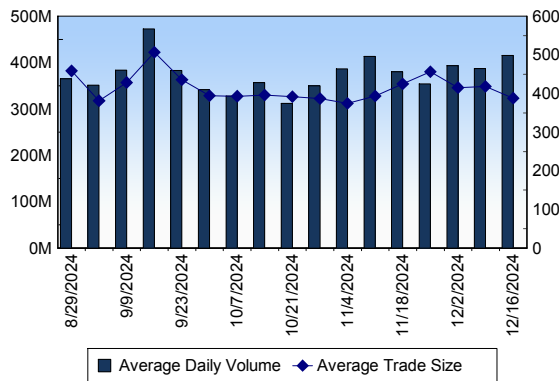
TSX

Daily Volume	394,425,946
Daily Value	\$12,334,388,893
Daily Trades	1,129,532
Daily Symbols Traded	2,106

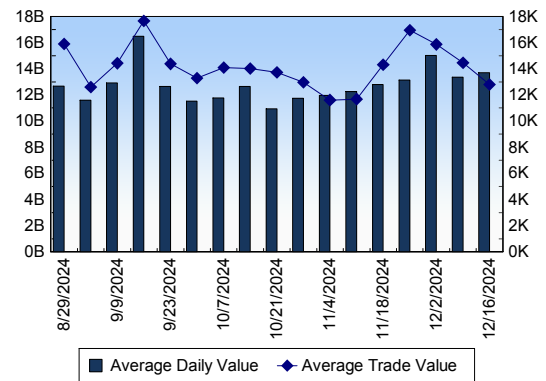
TSX ANONYMOUS TRADING

Daily Volume	201,420,433
Daily Value	\$6,803,033,512
Average Trade Size	340
% TSX Volume	51.07 %

TSX Volume



TSX Value (in Canadian Dollars)



Top 20 TSX Symbols by Volume

Symbol	TSX Volume	TSX Value
CNQ	16,356,592	\$695,021,922
DIAM	7,477,108	\$152,778
ENB	6,605,113	\$386,937,798
TD	6,248,508	\$465,009,039
SU	6,184,930	\$308,237,030
CM	6,069,882	\$558,130,537
MFC	6,030,986	\$261,243,462
T	5,743,017	\$113,803,167
FCU	5,354,899	\$4,031,741
AC	5,077,666	\$110,511,721
XIU	4,927,938	\$182,847,982
WNDR	4,598,835	\$1,328,432
PPL	4,401,290	\$228,367,632
BTE	4,121,140	\$13,330,310
BITF	4,079,122	\$10,371,136
BCE	4,021,257	\$134,784,545
ABX	3,749,086	\$82,401,506
GWO	3,748,512	\$175,233,554
TRP	3,578,048	\$233,379,066
CVE	3,082,303	\$63,963,806

Top 20 TSX Symbols by Value

Symbol	TSX Volume	TSX Value
CNQ	16,356,592	\$695,021,922
CM	6,069,882	\$558,130,537
TD	6,248,508	\$465,009,039
SHOP	2,559,417	\$395,220,400
ENB	6,605,113	\$386,937,798
RY	2,057,291	\$355,516,796
SU	6,184,930	\$308,237,030
MFC	6,030,986	\$261,243,462
TRP	3,578,048	\$233,379,066
BMO	1,668,151	\$232,156,267
PPL	4,401,290	\$228,367,632
BNS	2,853,718	\$219,790,962
XIU	4,927,938	\$182,847,982
CP	1,762,896	\$181,393,085
GWO	3,748,512	\$175,233,554
CNR	1,099,519	\$159,606,870
NA	1,047,233	\$137,898,584
BCE	4,021,257	\$134,784,545
CSU	28,643	\$128,127,527
BN	1,584,223	\$126,960,815

ETF Trading

Daily Volume	57,148,317	Average Trade Value	\$14,574
Daily Value	\$1,572,918,703	Average Trade Size	530
# Trades	107,928	# of ETFs Traded	1,015

Top 10 ETFs by TSX Volume

Symbol	Market Volume	Market Value
XIU	4,927,938	\$182,847,982
HND	2,918,861	\$47,835,779
XEG	2,909,381	\$47,885,314
ZEB	2,902,498	\$122,330,511
HQU	1,887,334	\$45,949,896
HNU	1,782,761	\$56,706,067
BTCC	1,600,990	\$29,271,869
BTCX.B	1,517,526	\$31,502,494
HQD	1,436,756	\$14,742,064
ETHX.B	1,420,694	\$25,296,925

Top 10 ETFs by TSX Value

Symbol	Market Volume	Market Value
XIU	4,927,938	\$182,847,982
ZEB	2,902,498	\$122,330,511
VFV	465,738	\$70,219,948
HNU	1,782,761	\$56,706,067
ZSP	565,641	\$52,495,378
XEG	2,909,381	\$47,885,314
HND	2,918,861	\$47,835,779
HQU	1,887,334	\$45,949,896
XSP	636,559	\$39,189,061
BTCX.B	1,517,526	\$31,502,494

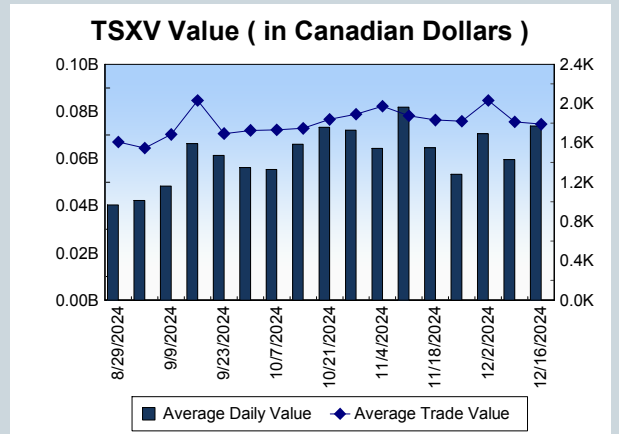
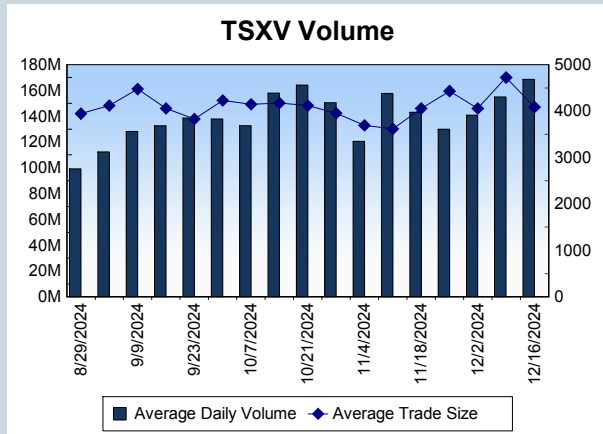
Block Trades	Non Block Trades
1,360	1,128,172

Top 5 Block Trade Brokers by Volume	
Broker	TSX Block Volume
BMO NESBITT BURNS INC.	30,109,300
GOLDMAN SACHS CANADA I	16,552,900
RBC CAPITAL MARKETS	15,222,700
TD SECURITIES INC.	12,948,000
CIBC WORLD MARKETS INC.	9,919,300

Top 5 Block Trade Symbols by Volume	
Symbol	TSX Block Volume
CNQ	12,258,500
ENB	4,369,600
SU	4,244,500
CM	3,802,300
TD	3,111,300

TSXV	
Daily Volume	152,358,457
Daily Value	\$70,981,571
Daily Trades	37,935
Daily Symbols Traded	1,097

TSXV ANONYMOUS TRADING	
Daily Volume	70,950,275
Daily Value	\$40,852,417
Average Trade Size	3,919
% TSXV Volume	46.57%



Top 20 TSXV Symbols by Volume		
Symbol	TSXV Volume	TSXV Value
QNC	6,060,619	\$2,450,176
TAU	5,907,100	\$3,161,660
GPUS	3,949,277	\$438,611
MATE	3,849,211	\$817,326
CPER	3,225,138	\$371,426
GFG	2,460,500	\$380,103
DMGI	2,098,100	\$826,131
WWT	2,010,100	\$10,101
LOU	1,818,926	\$716,431
THRM	1,682,373	\$51,561
CMD	1,666,900	\$151,754
AEC	1,649,662	\$139,804
VXTR	1,586,144	\$81,252
TAO	1,561,123	\$208,571
ONE	1,374,450	\$309,053
TR	1,293,000	\$51,720
GXU	1,267,196	\$57,865
HIVE	1,134,575	\$5,385,825
ROVR	1,121,040	\$11,210
RUG	1,099,528	\$21,822

Top 20 TSXV Symbols by Value		
Symbol	TSXV Volume	TSXV Value
TOI	76,104	\$8,604,109
LMN	144,013	\$5,991,537
ARTG	409,043	\$5,685,982
HIVE	1,134,575	\$5,385,825
TAU	5,907,100	\$3,161,660
QNC	6,060,619	\$2,450,176
PTK	228,536	\$1,635,628
NDA	1,001,034	\$1,015,000
PNG	377,414	\$950,117
NGEN	298,248	\$877,767
DMGI	2,098,100	\$826,131
MATE	3,849,211	\$817,326
LOU	1,818,926	\$716,431
MAU	340,774	\$715,182
HITI	161,390	\$684,016
NFG	300,734	\$682,476
EU	120,954	\$583,849
SLI	280,503	\$563,454
GMG	751,763	\$536,694
EMO	435,563	\$489,850

Dark TSX/TSXV Trading			
Volume	34,366,410	Daily Trades	155,388
Value	1,221,303,756	Daily Symbols Traded	1,476