

DAILY REPORT



For more information, email trading_sales@tsx.com

December 13, 2024

Indices	December 13 Close	Previous Close	Change	% Change
S&P/TSX Composite Index	25,274.30	25,410.71		-0.54 %
S&P/TSX 60 Index	1,516.97	1,524.85		-0.52 %
S&P/TSX Venture Composite	607.84	611.88		-0.66 %
S&P/TSX Completion Index	1,513.44	1,522.92		-0.62 %
S&P/TSX Smallcap Index	824.15	833.83		-1.16 %

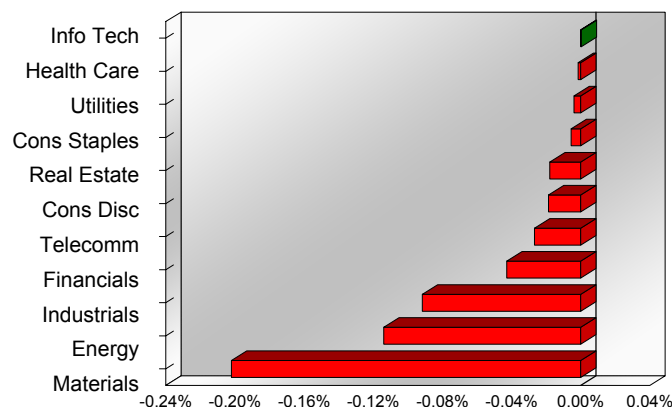
S&P/TSX Composite Index		
Advancers	Decliners	Unchanged
55	161	3

S&P/TSX Composite Index			
Top 10 Index Contributors		Top 10 Index Detractors	
Constituent	Index Contribution	Constituent	Index Contribution
CLS	10.75	WCN	-11.03
BNS	2.96	SHOP	-8.06
MFC	2.77	AEM	-7.22
ATD	2.28	CCO	-7.17
CVE	2.04	BN	-7.05
CPX	1.47	ABX	-6.52
NTR	1.47	TECK.B	-4.91
ARX	1.41	SU	-4.87
FFH	1.38	FNV	-3.91
CSU	1.31	CNR	-3.84

S&P/TSX Composite Index			
Top 10 Advancers		Top 10 Decliners	
Constituent	Return	Constituent	Return
CLS	9.12%	ENGH	-12.89%
CPX	2.57%	OGC	-5.34%
TA	2.09%	HBM	-5.15%
PXT	1.63%	SIL	-4.59%
BDT	1.59%	ERO	-4.32%
EIF	1.58%	EQX	-4.25%
ATS	1.54%	BIR	-4.15%
ASTL	1.34%	NG	-3.94%
IPCO	1.33%	IMG	-3.92%
ARX	1.30%	NXE	-3.61%

S&P/TSX Composite Index				
Sector	# of Index Constituents	Weight	Market Cap (\$B)	Index Contribution
Information Technology	10	10.44 %	\$376.33	0.08
Health Care	4	0.29 %	\$10.29	-0.38
Utilities	15	3.73 %	\$134.30	-0.96
Consumer Staples	10	4.00 %	\$144.15	-1.39
Real Estate	20	1.97 %	\$71.07	-4.55
Consumer Discretionary	11	3.30 %	\$118.88	-4.72
Communication Services	5	2.48 %	\$89.32	-6.78
Financials	26	32.82 %	\$1,183.23	-10.86
Industrials	27	12.48 %	\$449.82	-23.26
Energy	41	16.79 %	\$605.18	-28.94
Materials	50	11.72 %	\$422.48	-51.33
S&P/TSX Composite Index	219	100.00 %	\$3,605.04	-133.08

S&P/TSX Composite Index - Sectors Returns



This report is published by TSX Inc. TSX Inc. does not guarantee either the completeness or the accuracy of this information. The information contained in this report is provided for informational purposes only and you agree not to rely upon the information contained in this report for any trading, business or financial purpose. These sheets are printed in Canada and issued by TSX Inc. under the express condition, to which everyone receiving or making use thereof assents, that no liability shall be incurred by TSX Inc. or its affiliated companies or any other vendor or donor, including, without limitation, for reliance on or for any errors or inaccuracies in this report. Neither TMX Group Limited, TSX Inc., nor any of their affiliated companies, guarantees the completeness of the information contained in this document and are not responsible for any errors or omission in or your use of, or reliance on, the information. This publication is under copyright. © 2016 TSX Inc. All rights reserved. Do not copy, distribute, sell or modify this publication without the prior written consent of TSX Inc. <http://www.tsx.com/trading>

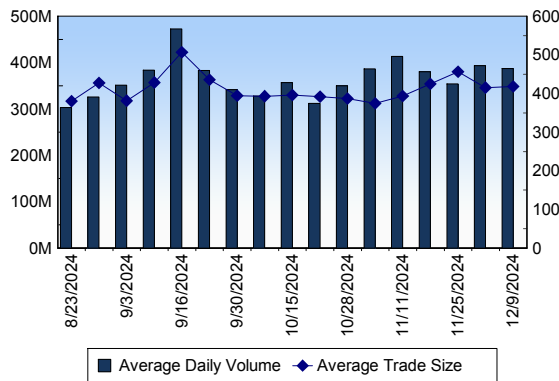
TSX

Daily Volume	344,822,279
Daily Value	\$11,415,920,597
Daily Trades	846,655
Daily Symbols Traded	2,130

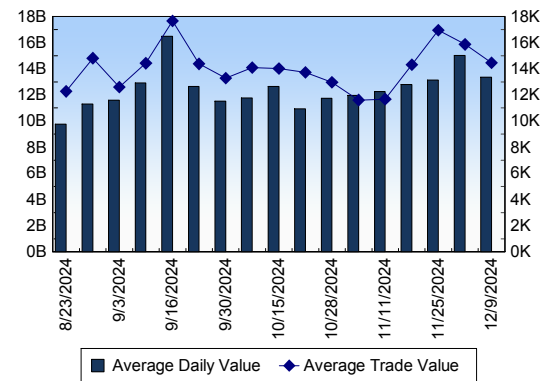
TSX ANONYMOUS TRADING

Daily Volume	168,649,065
Daily Value	\$6,059,490,078
Average Trade Size	391
% TSX Volume	48.91 %

TSX Volume



TSX Value (in Canadian Dollars)



Top 20 TSX Symbols by Volume

Symbol	TSX Volume	TSX Value
CNQ	24,879,919	\$1,111,655,713
PPL	8,998,222	\$490,231,346
T	6,564,364	\$135,791,854
BCE	5,436,398	\$197,073,948
TRP	5,226,429	\$345,369,948
MFC	5,200,651	\$229,004,236
TD	4,989,836	\$378,737,271
CVE	4,357,623	\$94,345,628
AC	4,228,460	\$105,417,223
ENB	4,166,946	\$248,583,838
BITF	4,013,123	\$11,267,242
BMO	3,903,714	\$550,321,062
K	3,538,881	\$49,256,988
CS	3,218,866	\$28,801,305
VRN	3,140,993	\$21,729,460
RCI.B	3,068,396	\$145,553,251
CXB	3,046,309	\$7,016,400
SU	3,004,319	\$157,279,157
ALA	2,865,856	\$94,079,390
AIDX	2,857,297	\$6,421,871

Top 20 TSX Symbols by Value

Symbol	TSX Volume	TSX Value
CNQ	24,879,919	\$1,111,655,713
BMO	3,903,714	\$550,321,062
PPL	8,998,222	\$490,231,346
TD	4,989,836	\$378,737,271
RY	1,986,044	\$352,021,427
TRP	5,226,429	\$345,369,948
ENB	4,166,946	\$248,583,838
QSR	2,435,974	\$240,100,237
SHOP	1,426,383	\$232,893,144
MFC	5,200,651	\$229,004,236
BNS	2,676,391	\$211,087,766
CM	2,154,964	\$202,792,761
BCE	5,436,398	\$197,073,948
CLS	1,280,329	\$177,095,916
SU	3,004,319	\$157,279,157
RCI.B	3,068,396	\$145,553,251
IMO	1,495,339	\$143,577,021
NA	1,044,986	\$139,952,033
CP	1,292,511	\$137,153,563
T	6,564,364	\$135,791,854

ETF Trading

Daily Volume	31,990,482	Average Trade Value	\$12,872
Daily Value	\$816,832,147	Average Trade Size	504
# Trades	63,459	# of ETFs Traded	1,036

Top 10 ETFs by TSX Volume

Symbol	Market Volume	Market Value
XIU	2,282,839	\$87,360,439
HOD	1,865,642	\$12,010,977
HND	1,655,082	\$29,933,048
BTCC	1,114,067	\$21,031,147
HNU	1,036,468	\$30,190,197
BTCC.B	1,004,810	\$20,509,570
ZEB	970,958	\$41,640,773
XEG	914,062	\$15,715,166
HQD	844,348	\$8,253,444
HQU	656,174	\$16,838,375

Top 10 ETFs by TSX Value

Symbol	Market Volume	Market Value
XIU	2,282,839	\$87,360,439
ZEB	970,958	\$41,640,773
VFV	210,061	\$32,156,261
HNU	1,036,468	\$30,190,197
HND	1,655,082	\$29,933,048
BTCC	1,114,067	\$21,031,147
BTCC.B	1,004,810	\$20,509,570
CASH	406,381	\$20,341,239
HQU	656,174	\$16,838,375
XEG	914,062	\$15,715,166

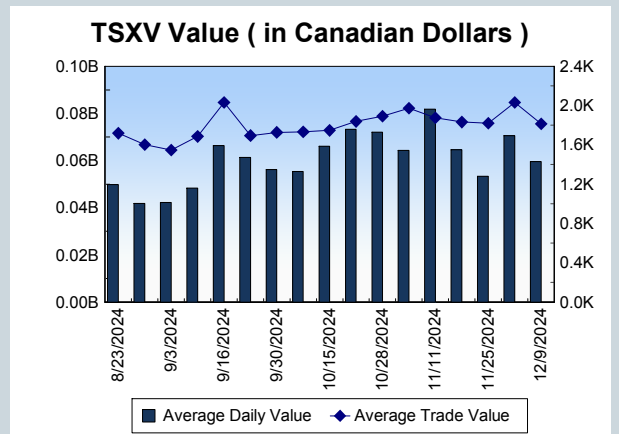
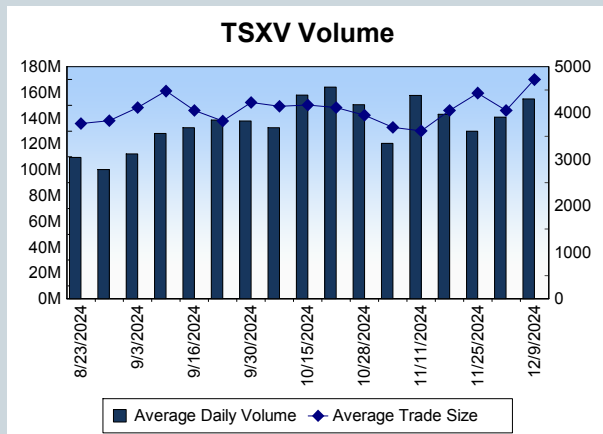
Block Trades	Non Block Trades
1,567	845,088

Top 5 Block Trade Brokers by Volume	
Broker	TSX Block Volume
GOLDMAN SACHS CANADA I	29,160,600
BMO NESBITT BURNS INC.	23,910,000
RBC CAPITAL MARKETS	17,055,100
TD SECURITIES INC.	15,508,600
NATIONAL BANK FINANCIAL	10,814,900

Top 5 Block Trade Symbols by Volume	
Symbol	TSX Block Volume
CNQ	21,920,400
PPL	6,189,800
MFC	3,253,500
BMO	3,067,900
TRP	2,977,900

TSXV	
Daily Volume	156,450,639
Daily Value	\$47,299,472
Daily Trades	29,086
Daily Symbols Traded	1,047

TSXV ANONYMOUS TRADING	
Daily Volume	79,342,760
Daily Value	\$24,311,757
Average Trade Size	5,825
% TSXV Volume	50.71%



Top 20 TSXV Symbols by Volume		
Symbol	TSXV Volume	TSXV Value
QNC	7,798,630	\$2,513,657
AMT	5,983,400	\$628,265
VXTR	5,886,605	\$294,330
MATE	5,191,293	\$755,086
KLX	4,277,000	\$42,770
PFC	3,515,000	\$70,425
ADY	3,088,000	\$508,115
CCB	2,636,085	\$39,291
KTR	2,457,000	\$24,570
SRES	2,041,000	\$102,050
RUG	1,890,088	\$95,819
VM	1,615,787	\$102,671
PEX	1,566,000	\$39,150
YFI	1,530,365	\$86,636
VRR	1,343,655	\$65,634
ONE	1,329,368	\$352,400
VCU	1,272,602	\$78,569
FEO	1,106,000	\$159,395
EMM	1,065,642	\$78,080
GOT	1,064,231	\$1,222,998

Top 20 TSXV Symbols by Value		
Symbol	TSXV Volume	TSXV Value
HIVE	548,980	\$3,016,027
QNC	7,798,630	\$2,513,657
TOI	12,866	\$1,553,935
PNG	517,612	\$1,413,379
PTK	223,066	\$1,344,476
GOT	1,064,231	\$1,222,998
KUT	247,602	\$1,206,796
ARTG	66,038	\$959,736
EU	202,714	\$930,749
ABRA	364,447	\$885,341
OIII	480,417	\$790,797
MATE	5,191,293	\$755,086
LMN	17,033	\$743,338
NFG	318,636	\$739,006
EMO	701,516	\$729,692
AMT	5,983,400	\$628,265
ZDC	177,791	\$613,393
FDR	131,664	\$592,408
MAU	258,444	\$556,616
NICU	374,702	\$508,767

Dark TSX/TSXV Trading			
Volume	24,167,060	Daily Trades	109,209
Value	830,637,906	Daily Symbols Traded	1,425