

DAILY REPORT



For more information, email trading_sales@tsx.com

October 23, 2024

Indices	October 23 Close	Previous Close	Change	% Change
S&P/TSX Composite Index	24,573.62	24,716.70		-0.58 %
S&P/TSX 60 Index	1,471.32	1,478.26		-0.47 %
S&P/TSX Venture Composite	612.72	627.31		-2.33 %
S&P/TSX Completion Index	1,486.58	1,502.01		-1.03 %
S&P/TSX Smallcap Index	835.72	846.75		-1.30 %

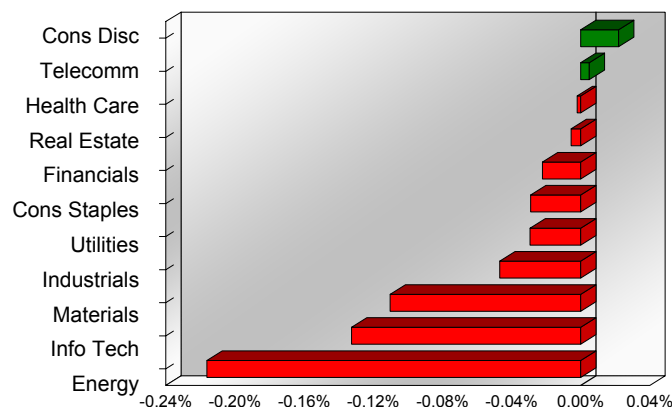
S&P/TSX Composite Index		
Advancers	Decliners	Unchanged
52	170	1

S&P/TSX Composite Index			
Top 10 Index Contributors		Top 10 Index Detractors	
Constituent	Index Contribution	Constituent	Index Contribution
QSR	4.50	SHOP	-21.69
RY	4.29	CCO	-10.28
AEM	3.66	CSU	-9.18
CM	3.00	TD	-7.43
BMO	2.93	CNQ	-6.52
CLS	1.73	SU	-6.43
WSP	1.22	CP	-6.30
FM	1.15	ABX	-6.17
DOL	0.96	ENB	-4.57
BAM	0.92	IVN	-4.36

S&P/TSX Composite Index			
Top 10 Advancers		Top 10 Decliners	
Constituent	Return	Constituent	Return
CLS	2.62%	SEA	-6.41%
EQX	2.59%	BB	-5.52%
QSR	1.99%	DML	-5.06%
QBR.B	1.69%	EFR	-4.77%
SES	1.43%	SOBO	-4.68%
FM	1.31%	IVN	-4.60%
CCA	1.25%	CCO	-4.49%
EQB	1.24%	NXE	-4.49%
BYD	1.09%	TSU	-4.38%
GSY	1.06%	ALA	-4.27%

S&P/TSX Composite Index				
Sector	# of Index Constituents	Weight	Market Cap (\$B)	Index Contribution
Consumer Discretionary	11	3.36 %	\$118.35	5.43
Communication Services	5	2.94 %	\$103.57	1.22
Health Care	4	0.31 %	\$10.98	-0.50
Real Estate	20	2.13 %	\$74.94	-1.36
Financials	27	31.96 %	\$1,124.12	-5.46
Consumer Staples	11	3.95 %	\$139.09	-7.15
Utilities	15	3.91 %	\$137.39	-7.24
Industrials	27	12.67 %	\$445.59	-11.59
Materials	52	13.04 %	\$458.57	-27.26
Information Technology	10	8.40 %	\$295.52	-32.77
Energy	41	17.32 %	\$609.05	-53.44
S&P/TSX Composite Index	223	100.00 %	\$3,517.17	-140.11

S&P/TSX Composite Index - Sectors Returns



This report is published by TSX Inc. TSX Inc. does not guarantee either the completeness or the accuracy of this information. The information contained in this report is provided for informational purposes only and you agree not to rely upon the information contained in this report for any trading, business or financial purpose. These sheets are printed in Canada and issued by TSX Inc. under the express condition, to which everyone receiving or making use thereof assents, that no liability shall be incurred by TSX Inc. or its affiliated companies or any other vendor or donor, including, without limitation, for reliance on or for any errors or inaccuracies in this report. Neither TMX Group Limited, TSX Inc., nor any of their affiliated companies, guarantees the completeness of the information contained in this document and are not responsible for any errors or omission in or your use of, or reliance on, the information. This publication is under copyright. © 2016 TSX Inc. All rights reserved. Do not copy, distribute, sell or modify this publication without the prior written consent of TSX Inc. <http://www.tsx.com/trading>

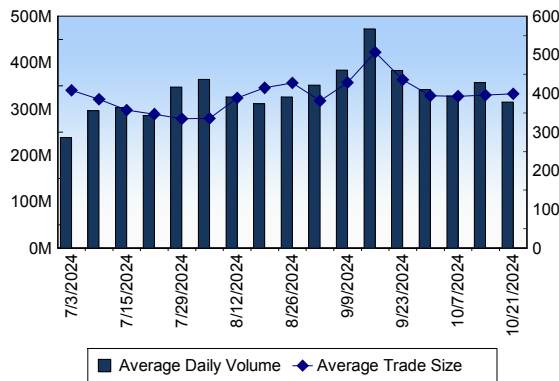
TSX

Daily Volume	303,951,813
Daily Value	\$9,810,495,272
Daily Trades	784,774
Daily Symbols Traded	2,084

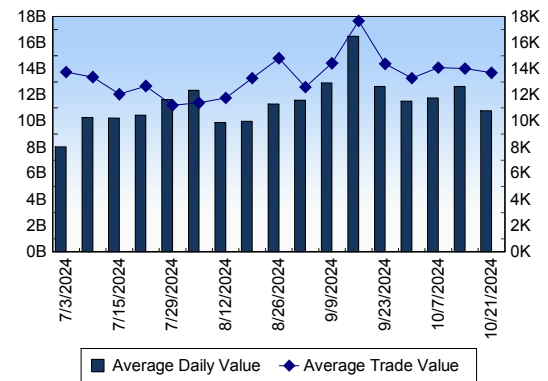
TSX ANONYMOUS TRADING

Daily Volume	155,322,894
Daily Value	\$5,362,163,597
Average Trade Size	387
% TSX Volume	51.10 %

TSX Volume



TSX Value (in Canadian Dollars)



Top 20 TSX Symbols by Volume

Symbol	TSX Volume	TSX Value
HNU	8,109,120	\$19,386,708
RY	7,924,136	\$1,372,992,686
CNQ	7,190,556	\$349,105,962
AOT	5,793,601	\$1,653,851
ENB	5,577,837	\$317,989,129
TRP	5,576,227	\$362,182,068
TD	5,402,328	\$423,662,392
MFC	5,196,931	\$215,754,128
AC	4,872,036	\$93,481,527
VRN	4,517,724	\$37,671,678
TVE	4,412,768	\$17,102,485
BTE	4,165,985	\$16,512,580
SU	4,058,234	\$216,578,714
BNS	3,788,912	\$274,482,416
WEED	3,783,082	\$26,216,068
ABX	3,025,612	\$87,178,390
ATH	2,760,785	\$14,157,630
BITF	2,738,266	\$7,568,673
CM	2,702,918	\$234,446,540
FCU	2,679,291	\$3,099,446

Top 20 TSX Symbols by Value

Symbol	TSX Volume	TSX Value
RY	7,924,136	\$1,372,992,686
TD	5,402,328	\$423,662,392
TRP	5,576,227	\$362,182,068
CNQ	7,190,556	\$349,105,962
ENB	5,577,837	\$317,989,129
BNS	3,788,912	\$274,482,416
CM	2,702,918	\$234,446,540
SU	4,058,234	\$216,578,714
MFC	5,196,931	\$215,754,128
CNR	1,300,558	\$204,104,413
NA	1,353,994	\$177,510,963
NTR	2,605,109	\$172,118,947
BMO	1,302,884	\$167,965,893
SHOP	1,293,845	\$143,350,886
AEM	975,904	\$119,000,566
CCO	1,405,608	\$106,318,533
RCI.B	1,943,014	\$105,308,327
CP	950,315	\$103,782,892
FTS	1,666,782	\$103,439,901
WSP	411,971	\$102,923,720

ETF Trading

Daily Volume	39,411,457	Average Trade Value	\$12,929
Daily Value	\$801,425,758	Average Trade Size	636
# Trades	61,987	# of ETFs Traded	976

Top 10 ETFs by TSX Volume

Symbol	Market Volume	Market Value
HNU	8,109,120	\$19,386,708
HQU	2,278,437	\$50,343,957
ZEB	1,629,472	\$66,820,129
HQD	1,392,723	\$15,896,188
XIU	1,220,713	\$45,506,892
HOD	1,083,748	\$7,354,001
HGD	1,039,648	\$2,074,605
XRE	819,987	\$13,862,456
HOU	779,834	\$9,468,456
DLR	778,273	\$10,970,983

Top 10 ETFs by TSX Value

Symbol	Market Volume	Market Value
ZEB	1,629,472	\$66,820,129
HQU	2,278,437	\$50,343,957
XIU	1,220,713	\$45,506,892
VFV	234,783	\$33,466,236
ZSP	248,670	\$21,812,727
HNU	8,109,120	\$19,386,708
HND	193,299	\$17,570,985
HQD	1,392,723	\$15,896,188
HSU	614,126	\$15,482,746
XRE	819,987	\$13,862,456

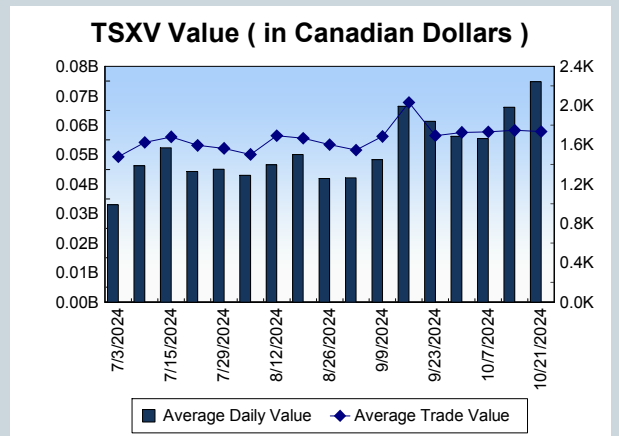
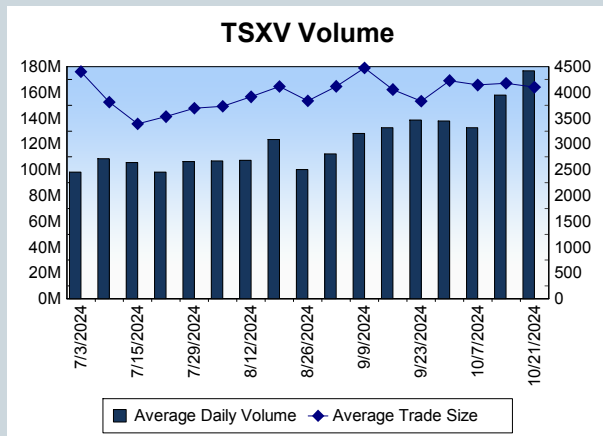
Block Trades	Non Block Trades
917	783,857

Top 5 Block Trade Brokers by Volume	
Broker	TSX Block Volume
TD SECURITIES INC.	19,232,800
CIBC WORLD MARKETS INC.	17,199,100
MERRILL LYNCH CANADA LT	15,813,100
BMO NESBITT BURNS INC.	14,660,900
SCOTIA CAPITAL INC.	10,768,600

Top 5 Block Trade Symbols by Volume	
Symbol	TSX Block Volume
RY	6,729,900
CNQ	5,409,700
TRP	4,471,500
ENB	3,778,000
MFC	3,463,900

TSXV	
Daily Volume	142,938,134
Daily Value	\$59,631,985
Daily Trades	35,549
Daily Symbols Traded	1,066

TSXV ANONYMOUS TRADING	
Daily Volume	80,684,995
Daily Value	\$36,762,234
Average Trade Size	4,240
% TSXV Volume	56.45%



Top 20 TSXV Symbols by Volume		
Symbol	TSXV Volume	TSXV Value
MJS	2,965,000	\$237,225
VRB	2,903,500	\$29,428
AEC	2,316,583	\$251,053
FKM	2,128,789	\$237,569
WOOD.P	1,798,000	\$28,305
YES	1,750,150	\$388,385
HELI	1,742,540	\$87,122
CAM	1,658,753	\$243,990
GSVR	1,556,559	\$452,783
SPA	1,451,576	\$198,155
YOO	1,345,000	\$40,350
GDP.H	1,278,907	\$6,395
THRM	1,241,229	\$56,063
WRLG	1,121,093	\$758,170
AMK	1,095,214	\$313,150
VCU	1,078,000	\$80,225
ETU	1,028,671	\$5,714
NBLC	1,000,000	\$49,890
DOS	957,826	\$23,951
GXU	914,382	\$73,506

Top 20 TSXV Symbols by Value		
Symbol	TSXV Volume	TSXV Value
HIVE	783,234	\$3,976,019
TOI	26,634	\$3,340,469
VZLA	871,765	\$2,686,013
LIFT	481,575	\$1,974,790
MAU	598,935	\$1,326,530
LMN	35,422	\$1,147,728
EU	198,761	\$1,113,846
ABRA	351,124	\$1,077,724
AFM	780,321	\$993,110
ARTG	66,155	\$963,494
SGD	156,665	\$959,655
HITI	222,342	\$857,441
PTK	155,841	\$824,115
SLI	276,449	\$802,989
QTWO	666,140	\$777,431
WRLG	1,121,093	\$758,170
OIII	639,289	\$706,115
APM	349,626	\$694,767
DV	477,650	\$648,631
NFG	178,333	\$620,161

Dark TSX/TSXV Trading			
Volume	23,290,900	Daily Trades	98,525
Value	722,529,860	Daily Symbols Traded	1,405