

# DAILY REPORT



For more information, email [trading\\_sales@tsx.com](mailto:trading_sales@tsx.com)

April 16, 2024

Indices	April 16 Close	Previous Close	Change	% Change
S&P/TSX Composite Index	21,642.87	21,740.20		-0.45 %
S&P/TSX 60 Index	1,294.98	1,302.26		-0.56 %
S&P/TSX Venture Composite	572.57	576.67		-0.71 %
S&P/TSX Completion Index	1,312.98	1,312.75		0.02 %
S&P/TSX Smallcap Index	750.96	753.76		-0.37 %

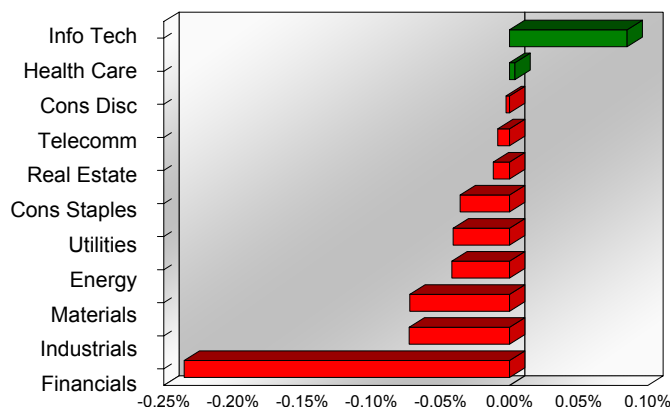
S&P/TSX Composite Index		
Advancers	Decliners	Unchanged
86	129	9

S&P/TSX Composite Index			
Top 10 Index Contributors		Top 10 Index Detractors	
Constituent	Index Contribution	Constituent	Index Contribution
CSU	8.40	RY	-18.31
SU	6.15	ENB	-14.32
SHOP	3.49	ABX	-13.94
DSG	3.33	BNS	-11.60
FM	3.16	BMO	-9.58
FFH	3.11	CP	-9.25
AEM	2.22	TRP	-7.14
GIB.A	1.96	CNR	-6.23
IFC	1.83	CM	-5.17
IMO	1.80	ATD	-4.96

S&P/TSX Composite Index			
Top 10 Advancers		Top 10 Decliners	
Constituent	Return	Constituent	Return
DSG	4.43%	FR	-8.24%
KNT	4.14%	ABX	-4.96%
FM	4.10%	BLX	-3.44%
CS	3.56%	NWH.UN	-3.21%
TLRY	3.24%	EFR	-3.14%
CLS	3.20%	SSRM	-2.93%
GOOS	2.86%	PEY	-2.72%
LUG	2.61%	FIL	-2.43%
MEG	2.54%	BTO	-2.40%
MTY	2.51%	BEP.UN	-2.34%

S&P/TSX Composite Index				
Sector	# of Index Constituents	Weight	Market Cap (\$B)	Index Contribution
Information Technology	10	8.31 %	\$257.31	18.50
Health Care	4	0.30 %	\$9.44	0.84
Consumer Discretionary	13	3.52 %	\$108.91	-0.54
Communication Services	5	3.16 %	\$97.76	-1.85
Real Estate	21	2.20 %	\$68.12	-2.57
Consumer Staples	11	4.06 %	\$125.58	-7.75
Utilities	15	3.56 %	\$110.29	-8.89
Energy	41	18.49 %	\$572.45	-9.08
Materials	50	11.80 %	\$365.46	-15.68
Industrials	27	14.39 %	\$445.67	-15.77
Financials	27	30.20 %	\$935.15	-51.16
<b>S&amp;P/TSX Composite Index</b>	<b>224</b>	<b>100.00 %</b>	<b>\$3,096.14</b>	<b>-93.94</b>

S&P/TSX Composite Index - Sectors Returns



This report is published by TSX Inc. TSX Inc. does not guarantee either the completeness or the accuracy of this information. The information contained in this report is provided for informational purposes only and you agree not to rely upon the information contained in this report for any trading, business or financial purpose. These sheets are printed in Canada and issued by TSX Inc. under the express condition, to which everyone receiving or making use thereof assents, that no liability shall be incurred by TSX Inc. or its affiliated companies or any other vendor or donor, including, without limitation, for reliance on or for any errors or inaccuracies in this report. Neither TMX Group Limited, TSX Inc., nor any of their affiliated companies, guarantees the completeness of the information contained in this document and are not responsible for any errors or omission in or your use of, or reliance on, the information. This publication is under copyright. © 2016 TSX Inc. All rights reserved. Do not copy, distribute, sell or modify this publication without the prior written consent of TSX Inc. <http://www.tsx.com/trading>

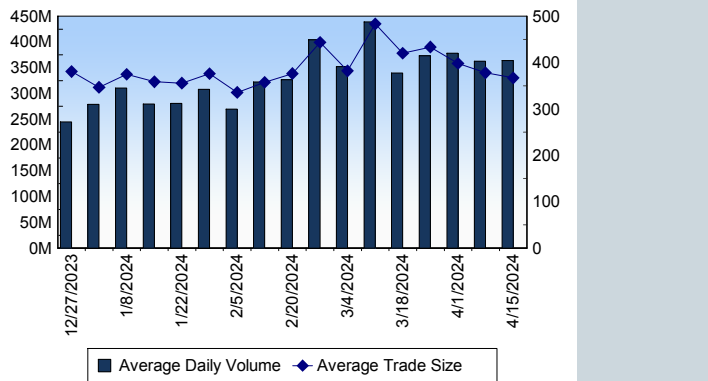
## TSX

Daily Volume	353,302,560
Daily Value	\$11,475,027,369
Daily Trades	1,032,438
Daily Symbols Traded	2,108

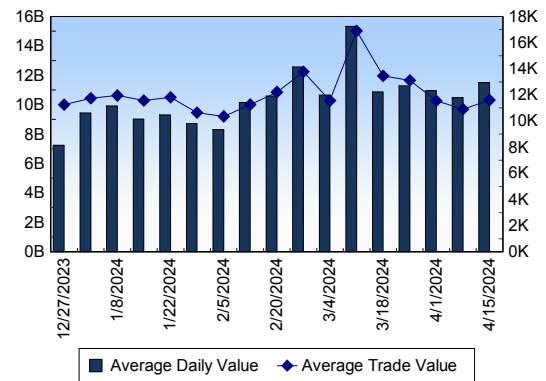
## TSX ANONYMOUS TRADING

Daily Volume	154,418,112
Daily Value	\$4,806,092,721
Average Trade Size	298
% TSX Volume	43.71 %

### TSX Volume



### TSX Value ( in Canadian Dollars )



### Top 20 TSX Symbols by Volume

Symbol	TSX Volume	TSX Value
TD	13,207,394	\$1,024,576,961
ENB	8,638,980	\$394,682,133
HNU	8,142,438	\$27,726,402
CVE	7,526,403	\$214,509,858
TRP	7,397,628	\$360,518,127
ABX	6,652,169	\$151,076,118
BTO	6,071,596	\$22,177,484
CNQ	5,784,899	\$619,184,368
RY	5,618,944	\$751,743,304
SU	5,006,277	\$259,547,807
CM	4,347,946	\$282,382,573
BNS	4,022,918	\$258,625,432
BTE	4,004,368	\$20,236,187
MFC	3,961,707	\$124,654,057
AR	3,848,363	\$1,573,794
ZEB	3,800,280	\$134,536,229
TVE	3,644,874	\$13,949,809
T	3,625,972	\$78,243,641
IVN	3,404,224	\$63,568,348
LUN	3,161,703	\$47,907,998

### Top 20 TSX Symbols by Value

Symbol	TSX Volume	TSX Value
TD	13,207,394	\$1,024,576,961
RY	5,618,944	\$751,743,304
CNQ	5,784,899	\$619,184,368
ENB	8,638,980	\$394,682,133
TRP	7,397,628	\$360,518,127
BMO	2,679,955	\$337,748,268
CM	4,347,946	\$282,382,573
SHOP	2,922,505	\$277,535,570
SU	5,006,277	\$259,547,807
BNS	4,022,918	\$258,625,432
NA	2,110,003	\$233,625,103
CVE	7,526,403	\$214,509,858
ATD	2,822,424	\$212,430,721
CNR	936,605	\$165,080,491
ABX	6,652,169	\$151,076,118
ZEB	3,800,280	\$134,536,229
BN	2,452,065	\$130,989,515
BCE	2,943,783	\$130,790,924
EMA	2,802,697	\$130,135,495
CP	1,109,128	\$129,609,740

### ETF Trading

Daily Volume	41,079,084	Average Trade Value	\$12,538
Daily Value	\$906,196,553	Average Trade Size	568
# Trades	72,274	# of ETFs Traded	973

### Top 10 ETFs by TSX Volume

Symbol	Market Volume	Market Value
HNU	8,142,438	\$27,726,402
ZEB	3,800,280	\$134,536,229
XIU	2,856,312	\$93,779,478
XEG	1,381,865	\$26,134,822
HQU	1,339,998	\$24,500,154
HGD	1,192,886	\$5,017,764
DLR	831,524	\$11,651,190
XGD	786,501	\$15,088,083
HGU	722,120	\$11,505,580
HOD	690,150	\$4,228,218

### Top 10 ETFs by TSX Value

Symbol	Market Volume	Market Value
ZEB	3,800,280	\$134,536,229
XIU	2,856,312	\$93,779,478
HXT	641,444	\$35,411,880
VFV	252,964	\$31,370,776
HND	264,988	\$30,118,973
HNU	8,142,438	\$27,726,402
XEG	1,381,865	\$26,134,822
ZSP	324,640	\$24,806,411
HQU	1,339,998	\$24,500,154
XFN	354,114	\$16,988,059

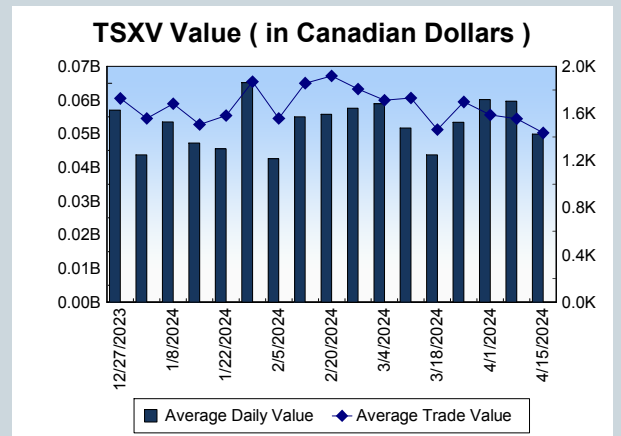
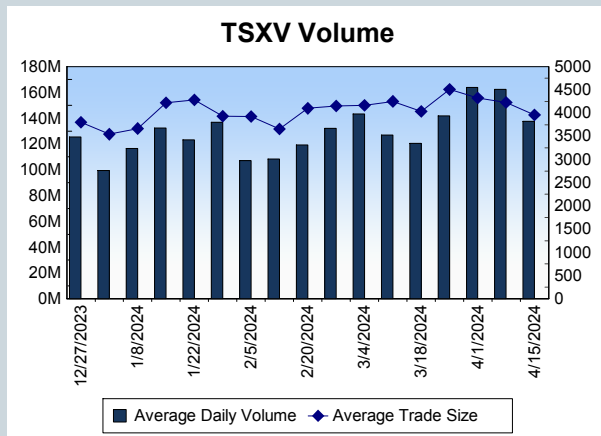
<b>Block Trades</b>	<b>Non Block Trades</b>
1,184	1,031,254

Top 5 Block Trade Brokers by Volume	
Broker	TSX Block Volume
NATIONAL BANK FINANCIAL	17,908,900
RBC CAPITAL MARKETS	16,161,800
TD SECURITIES INC.	14,078,600
SCOTIA CAPITAL INC.	13,150,200
MERRILL LYNCH CANADA LT	11,151,000

Top 5 Block Trade Symbols by Volume	
Symbol	TSX Block Volume
TD	9,772,800
ENB	4,876,900
TRP	4,632,000
CVE	3,924,900
RY	3,690,500

TSXV	
Daily Volume	135,451,779
Daily Value	\$47,945,630
Daily Trades	33,113
Daily Symbols Traded	1,106

TSXV ANONYMOUS TRADING	
Daily Volume	82,690,113
Daily Value	\$28,108,222
Average Trade Size	4,670
% TSXV Volume	61.05%



Top 20 TSXV Symbols by Volume		
Symbol	TSXV Volume	TSXV Value
JHC	8,367,000	\$98,040
TBR	5,751,384	\$757,386
FUU	5,202,496	\$2,054,570
THRM	4,097,900	\$41,114
PTU	2,054,681	\$89,729
SOI	1,784,642	\$125,895
GXU	1,717,977	\$217,405
THNK	1,499,415	\$461,686
CVV	1,459,069	\$850,592
PLUR	1,432,251	\$43,043
ECR	1,430,000	\$109,385
DKL	1,326,330	\$60,005
BIG	1,218,804	\$945,443
ABRA	1,044,957	\$383,776
OSI	1,009,996	\$1,813,031
ROS	983,500	\$77,928
AL	945,000	\$23,630
RHC	924,463	\$146,481
LG	895,200	\$53,712
AEC	891,140	\$83,562

Top 20 TSXV Symbols by Value		
Symbol	TSXV Volume	TSXV Value
FUU	5,202,496	\$2,054,570
TOI	16,472	\$1,999,558
LMN	53,361	\$1,972,095
OSI	1,009,996	\$1,813,031
HIVE	398,376	\$1,445,034
EU	237,915	\$1,351,140
ISO	327,546	\$1,275,114
GPAC	827,916	\$1,069,868
BIG	1,218,804	\$945,443
CVV	1,459,069	\$850,592
RML	743,882	\$840,672
ATX	545,403	\$758,723
TBR	5,751,384	\$757,386
AFM	660,176	\$725,948
ARTG	77,030	\$665,348
WRLG	646,863	\$622,580
NFG	115,403	\$583,930
SGML	26,786	\$503,486
VZLA	260,069	\$500,930
TCXT	443,198	\$464,721

Dark TSX/TSXV Trading			
Volume	23,417,450	Daily Trades	99,504
Value	733,096,790	Daily Symbols Traded	1,290