

# DAILY REPORT



For more information, email [trading\\_sales@tsx.com](mailto:trading_sales@tsx.com)

January 29, 2024

Indices	January 29 Close	Previous Close	Change	% Change
S&P/TSX Composite Index	21,200.06	21,125.28		0.35 %
S&P/TSX 60 Index	1,278.76	1,272.86		0.46 %
S&P/TSX Venture Composite	554.91	550.86		0.74 %
S&P/TSX Completion Index	1,243.00	1,244.49		-0.12 %
S&P/TSX Smallcap Index	705.35	706.26		-0.13 %

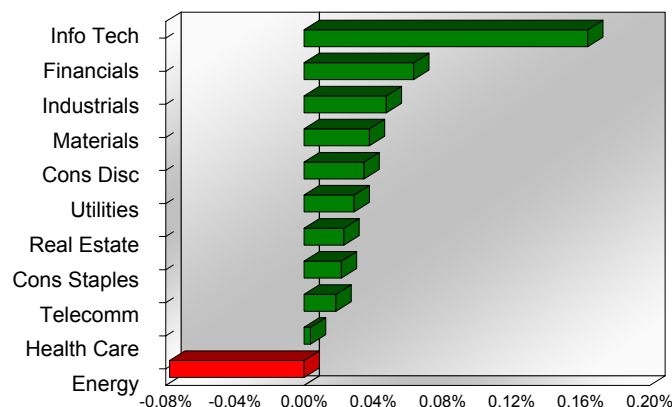
S&P/TSX Composite Index		
<b>Advancers</b>	<b>Decliners</b>	<b>Unchanged</b>
122	98	5

S&P/TSX Composite Index			
Top 10 Index Contributors		Top 10 Index Detractors	
Constituent	Index Contribution	Constituent	Index Contribution
SHOP	20.16	CNQ	-6.28
CSU	9.09	BMO	-5.78
TD	7.18	ONEX	-2.79
QSR	4.89	RY	-2.73
BN	4.42	MEG	-2.26
FFH	4.27	CVE	-1.67
CP	3.72	PAAS	-1.62
WPM	3.70	ARX	-1.37
CM	2.99	ENB	-1.33
BNS	2.96	FIL	-1.14

S&P/TSX Composite Index			
Top 10 Advancers		Top 10 Decliners	
Constituent	Return	Constituent	Return
BLDP	4.52%	NGD	-9.64%
SEA	4.22%	FIL	-9.55%
FCR.UN	3.43%	ONEX	-5.94%
WDO	2.85%	FR	-5.36%
NVEI	2.65%	GSY	-4.88%
BBU.UN	2.62%	MEG	-4.70%
BEP.UN	2.46%	CS	-4.49%
LSPD	2.42%	NVA	-4.28%
KNT	2.33%	PAAS	-3.54%
ERO	2.24%	IPCO	-2.90%

S&P/TSX Composite Index				
Sector	# of Index Constituents	Weight	Market Cap (\$B)	Index Contribution
Information Technology	10	9.34 %	\$283.18	34.65
Financials	27	30.98 %	\$939.17	13.41
Industrials	26	13.82 %	\$418.91	10.05
Materials	52	10.33 %	\$313.24	7.98
Consumer Discretionary	13	3.65 %	\$110.73	7.30
Utilities	15	3.95 %	\$119.75	6.12
Real Estate	21	2.40 %	\$72.66	4.88
Consumer Staples	11	4.26 %	\$129.16	4.56
Communication Services	5	3.83 %	\$116.23	3.91
Health Care	4	0.30 %	\$8.95	0.78
Energy	41	17.14 %	\$519.68	-16.45
<b>S&amp;P/TSX Composite Index</b>	<b>225</b>	<b>100.00 %</b>	<b>\$3,031.64</b>	<b>77.20</b>

S&P/TSX Composite Index - Sectors Returns



This report is published by TSX Inc. TSX Inc. does not guarantee either the completeness or the accuracy of this information. The information contained in this report is provided for informational purposes only and you agree not to rely upon the information contained in this report for any trading, business or financial purpose. These sheets are printed in Canada and issued by TSX Inc. under the express condition, to which everyone receiving or making use thereof assents, that no liability shall be incurred by TSX Inc. or its affiliated companies or any other vendor or donor, including, without limitation, for reliance on or for any errors or inaccuracies in this report. Neither TMX Group Limited, TSX Inc., nor any of their affiliated companies, guarantees the completeness of the information contained in this document and are not responsible for any errors or omission in or your use of, or reliance on, the information. This publication is under copyright. © 2016 TSX Inc. All rights reserved. Do not copy, distribute, sell or modify this publication without the prior written consent of TSX Inc. <http://www.tsx.com/trading>

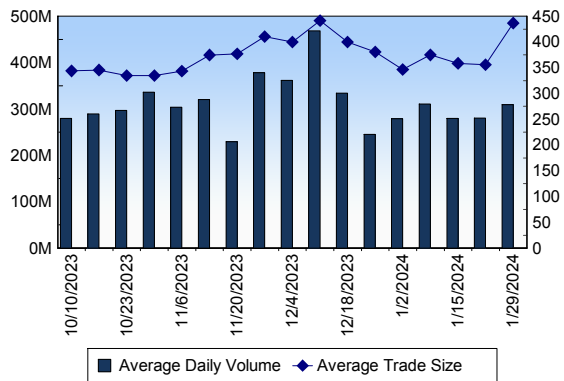
## TSX

Daily Volume	309,632,109
Daily Value	\$8,834,711,089
Daily Trades	708,882
Daily Symbols Traded	2,081

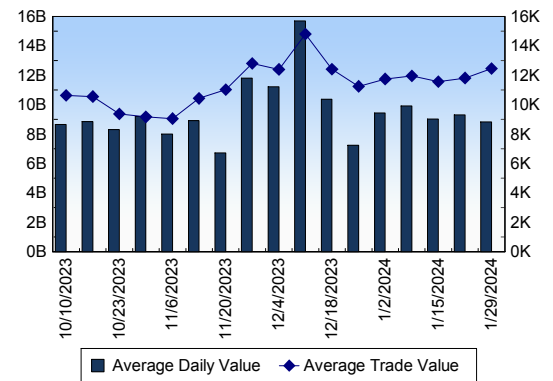
## TSX ANONYMOUS TRADING

Daily Volume	151,800,937
Daily Value	\$3,714,578,333
Average Trade Size	441
% TSX Volume	49.03 %

### TSX Volume



### TSX Value ( in Canadian Dollars )



### Top 20 TSX Symbols by Volume

Symbol	TSX Volume	TSX Value
RY	9,073,227	\$1,203,572,678
CS	7,834,205	\$51,908,669
NGD	6,836,308	\$10,420,277
HNU	6,142,197	\$36,217,879
MFC	5,748,000	\$168,514,765
BITF	5,596,231	\$18,217,470
ENB	5,364,288	\$258,380,769
BMO	5,172,395	\$666,920,528
TD	5,130,757	\$424,209,346
TRP	4,926,702	\$261,399,821
SU	4,659,740	\$204,653,390
GGD	4,596,406	\$6,653,074
AR	4,490,834	\$1,755,552
HBM	4,176,604	\$31,276,439
OLA	3,860,559	\$17,344,649
PAAS	3,699,619	\$67,109,413
LGD	3,698,686	\$894,449
AOT	3,661,675	\$2,421,766
CNQ	3,617,251	\$310,368,195
CM	3,324,371	\$205,839,015

### Top 20 TSX Symbols by Value

Symbol	TSX Volume	TSX Value
RY	9,073,227	\$1,203,572,678
BMO	5,172,395	\$666,920,528
TD	5,130,757	\$424,209,346
CNQ	3,617,251	\$310,368,195
SHOP	2,701,117	\$300,652,516
TRP	4,926,702	\$261,399,821
ENB	5,364,288	\$258,380,769
CM	3,324,371	\$205,839,015
SU	4,659,740	\$204,653,390
BNS	3,160,931	\$197,691,887
MFC	5,748,000	\$168,514,765
TOU	1,889,222	\$110,582,835
CNR	638,409	\$105,858,480
FFH	76,198	\$105,734,195
NTR	1,517,193	\$103,854,139
SLF	1,478,754	\$102,467,435
MG	1,328,535	\$100,699,228
BCE	1,784,426	\$98,208,612
EMA	1,787,198	\$87,548,643
CP	820,126	\$86,841,162

### ETF Trading

Daily Volume	28,570,836	Average Trade Value	\$11,263
Daily Value	\$604,041,917	Average Trade Size	533
# Trades	53,632	# of ETFs Traded	916

### Top 10 ETFs by TSX Volume

Symbol	Market Volume	Market Value
HNU	6,142,197	\$36,217,879
XIU	1,338,136	\$43,198,637
ZEB	1,084,210	\$37,778,851
HOU	941,822	\$12,361,048
HOD	775,106	\$6,113,672
HQD	758,133	\$11,269,036
XEG	560,484	\$8,749,315
DLR	534,136	\$7,259,649
HQU	480,765	\$8,736,634
XGD	454,121	\$7,444,053

### Top 10 ETFs by TSX Value

Symbol	Market Volume	Market Value
XIU	1,338,136	\$43,198,637
ZEB	1,084,210	\$37,778,851
HNU	6,142,197	\$36,217,879
VFV	216,713	\$25,332,753
HND	248,940	\$20,643,790
ZSP	257,525	\$18,568,556
CASH	317,592	\$15,940,571
HXT	252,764	\$13,610,211
HOU	941,822	\$12,361,048
HQD	758,133	\$11,269,036

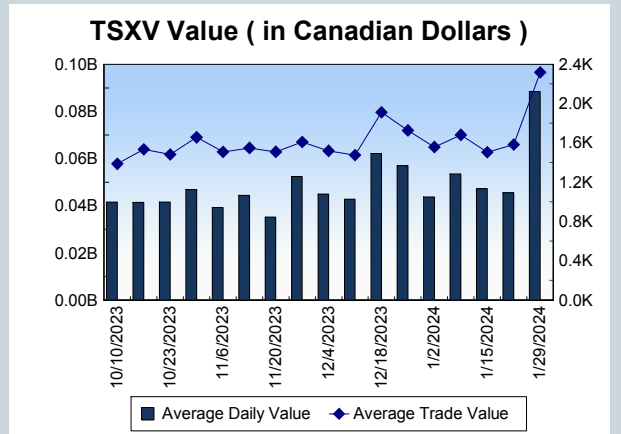
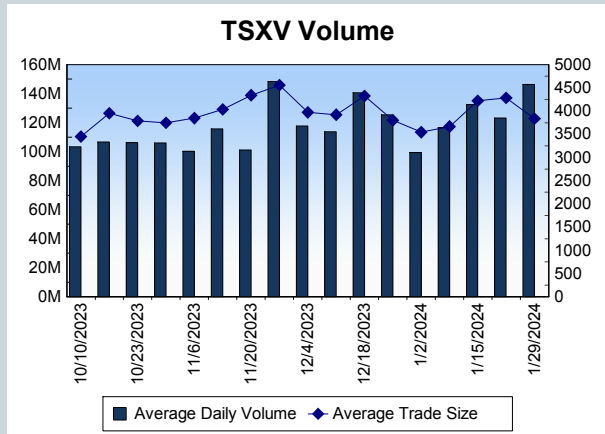
<b>Block Trades</b>	<b>Non Block Trades</b>
1,122	707,760

Top 5 Block Trade Brokers by Volume	
Broker	TSX Block Volume
VIRTU CANADA CORP	22,530,200
CIBC WORLD MARKETS INC.	20,145,400
BMO NESBITT BURNS INC.	16,969,200
GOLDMAN SACHS CANADA I	14,414,100
RBC CAPITAL MARKETS	13,278,800

Top 5 Block Trade Symbols by Volume	
Symbol	TSX Block Volume
RY	7,988,900
MFC	4,638,200
BMO	4,298,000
CS	4,202,000
TRP	3,861,000

TSXV	
Daily Volume	146,277,631
Daily Value	\$88,415,522
Daily Trades	38,121
Daily Symbols Traded	1,106

TSXV ANONYMOUS TRADING	
Daily Volume	92,888,748
Daily Value	\$66,866,375
Average Trade Size	4,101
% TSXV Volume	63.50%



Top 20 TSXV Symbols by Volume		
Symbol	TSXV Volume	TSXV Value
GSVR	12,516,450	\$2,703,601
ABRA	6,040,916	\$1,629,008
ORM	4,361,500	\$388,723
ARTG	3,711,874	\$24,975,897
VZLA	3,320,154	\$7,224,671
APM	3,239,409	\$2,735,558
SCZ	2,555,296	\$769,636
DV	2,327,013	\$1,527,992
RZE	2,180,139	\$556,248
WFLD	1,897,318	\$186,988
BAY	1,643,893	\$238,885
BCM	1,599,424	\$390,780
EVNI	1,368,781	\$678,714
TAU	1,342,297	\$545,883
MGG	1,329,038	\$182,058
DEC	1,319,932	\$70,956
QGR	1,218,440	\$65,707
SSVR	1,103,147	\$399,561
AFM	1,092,266	\$991,123
JK	1,088,179	\$92,495

Top 20 TSXV Symbols by Value		
Symbol	TSXV Volume	TSXV Value
ARTG	3,711,874	\$24,975,897
VZLA	3,320,154	\$7,224,671
HIVE	750,284	\$3,436,373
APM	3,239,409	\$2,735,558
GSVR	12,516,450	\$2,703,601
LMN	75,224	\$2,343,591
ABRA	6,040,916	\$1,629,008
MTA	448,447	\$1,583,056
DV	2,327,013	\$1,527,992
ISO	319,420	\$1,496,432
EU	209,576	\$1,249,041
SGD	235,123	\$1,227,596
AFM	1,092,266	\$991,123
TOI	8,972	\$934,073
OSI	651,873	\$923,789
PNRL	723,750	\$879,026
FISH	803,401	\$796,725
SCZ	2,555,296	\$769,636
PMET	109,740	\$767,756
EVNI	1,368,781	\$678,714

Dark TSX/TSXV Trading			
Volume	18,844,220	Daily Trades	78,359
Value	466,871,189	Daily Symbols Traded	1,231